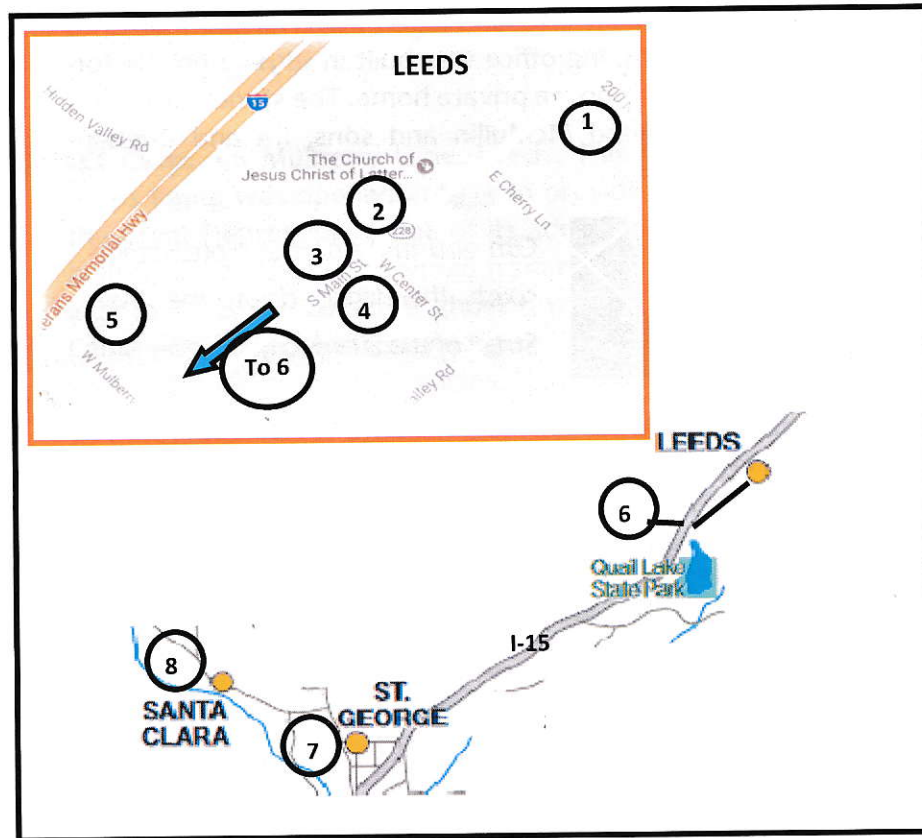




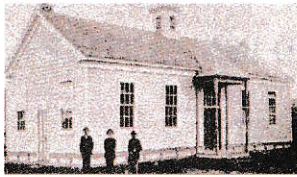
WHAT STORIES CAN THESE OLD WALLS TELL?

A Family Driving Tour

Several old buildings in our area are part of the Silver Reef story. Take a fun car tour to see some of these historic structures.



1. **Schoolhouse:** 218 N. Main St., Leeds. Silver Reef's school was a frame building constructed in 1880. It also served as the community hall for meetings and dances. In the early 1900s it was rolled 2 miles on logs pulled by horses to its present location. After serving as the Leeds schoolhouse for nearly 50 years, it became the Town Hall.



Can you see where the school bell was located?

2. **Tithing Office:** NW corner of Main and Center Streets, Leeds. The corner location of this old Mormon tithing office was originally the location of a Wells Fargo bank and stage business in Leeds. After Wells Fargo moved its operations to Silver Reef, the tithing office was built in 1891-92 on the former stage site. It is now a private home. The stone masonry is the work of Willard McMullin and sons, Ira and Brigham Young McMullin.



Can you imagine the express stage-coach thundering down the Main Street of Leeds each day?

3. **Willard McMullin Home:** 102 Main St., Leeds. One room of this lovely private home is an original one-room rock house built in 1881 by Willard McMullin.



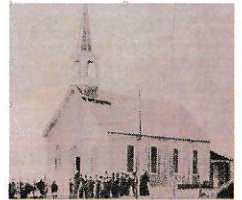
Can you see which part of the current home was this original rock house?

4. **William and Sarah Ann Stirling Home:** 15 S. Main St., Leeds. This home is of particular interest because of the story behind its construction: On a cold winter day, while riding his

horse through Silver Reef, William Stirling observed that the Christy Mill, one of the town's ore processing stamp mills, was overheating because its water supply was frozen solid. Fearing an explosion, he swiftly opened head gates to direct water from the Leeds ditch system to cool the overheating equipment. The grateful owners of the mill placed him on the payroll for a year with no work required! Stirling used the money to build this two-story brick home.



Stirling also moved Silver Reef's Catholic Church building next to this house. It was used as the Leeds recreation hall for many years before burning down.



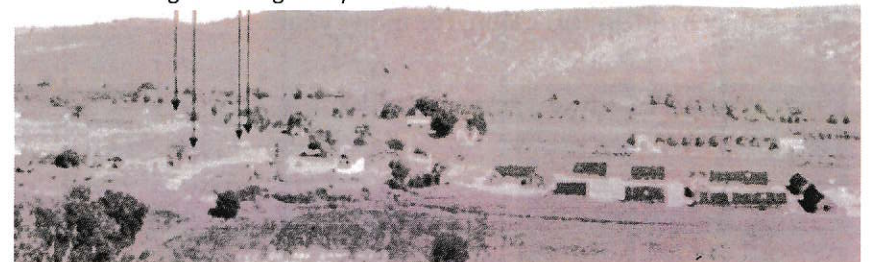
Do you know why Silver Reef's stamp mills needed water?

Hint: Steam

5. **CCC Camp:** 96 Mulberry Lane, Leeds. This Civilian Conservation Corps Camp was opened in 1933 to provide jobs for men during the Great Depression. Some of its administrative buildings were built from sandstone recovered from remains of sandstone buildings of Silver Reef, then a ghost town. It's the only Utah CCC Camp with buildings still standing.

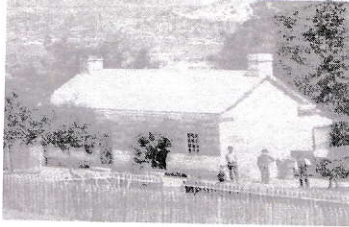
Did you know the CCC men received \$30.00 a month? They kept \$5.00 and the rest went back home to support their families.

Four Buildings standing today



(The CCC Camp as it appeared in the 1930s)

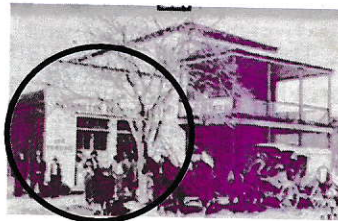
6. **Orson B. Adams Home:** On road to Red Cliffs Recreation Campground. The stone masonry on this house, built 1862-65, is attributed to Willard McMullin and his sons. John Kemple was renting a room here during the winter of 1866 when he made his silver discovery.



Can you imagine where Mr. Kemple took his walk and discovered rock containing silver?

Hint: Look towards the White Reef.

7. **Classic Printing:** 23 E. St. George Blvd., St. George. The frame construction store front and a portion of the interior of this building once belonged to an unidentified saloon in Silver Reef. It was moved to the St. George location in the 1890s to become the home of the Washington County News (published 1898-1986).



Why do you think people went to the trouble of moving buildings like this from Silver Reef when it became a ghost town?

8. **Miners Cabin:** 1397 Vernon St., Santa Clara (behind Frei's Fruit Stand). This is a miners cabin from Silver Reef, moved here on wagon wheels in the late 1800s by John Henry and Barbara Staheli Graf (Graff). Barbara was the first baby girl born in Santa Clara and was rescued in the Old Fort in the Great Flood in Jan 1862. The Graf family lived in this cabin for many years.



Did you know that in November and December of 1876, 2 or 3 structures like this were built in Silver Reef each day?
