

W H S

1950

Genuine Gossip

Dear Jenny,
I have had a lot of
fun with you this year.
You are quite an athlete.
I hope your personality gets
you places
Yours Pal
LaRene

Dear Jenny,
There's lots of
luck and happiness
in years to come.
It's been fun knowing
you.
a friend,
Nelda

Dear Jenny,

I really enjoyed
going to school with
you this year. Hope we
can have as much fun
next year.
a friend,
Gilbert Michelson

By
Lisa C. Anderson
Dear Jenny



Wish you
all the best
You'll have.
Love
Lara

Dear Jenny, may you always
be kind and friendly as you
were to me. May the desires
of your heart come true
Francis Sullivan

Dear Jenny,
I have enjoyed
working with you
this year in school.
I hope our friendships
continues next year when
we meet again.

Your friendly friend,
Daniel Miles

Dear Jennie
I think you are a very
sweet girl hope you
will find very much
happiness in your life.
Mrs. Westover

Thank you
Jenny

The

Dear Jenny,
When you get over in High School
be prepared for a tremendous rush
of college boys. You're the type they
really go for I hear.

Woodwardia

Daniel
Miles

'50-'51

WOODWARD
HIGH SCHOOL
ST. GEORGE
UTAH



MARY HELEN CLARK Commissioner of Publications

KARMA KEMP Editor

VIOLA CORNWALL, CLARK HAFEN Advisors

Dear Jenny
It has been nice
going to school with
you while in woodward.
I hop you will always
remember me as a friend.
I give you my best wishes
in the coming year of
your school.

a friend
Lo. Rae

Dear Jenny,
I have enjoyed going to
school with you. You
prominate very much.
We have been very good friends
in the past & I hope it will continue
in the future. Always yours,
Daniel Miles

Dear Jenny,

Remember for an old friend from Woodward
you are a cute girl with a darling
personality, play it cool with the boys
and stay out of mischief. Larry Adams.

Printed by
ARTS CITY PUBLISHING CO.
Springville, Utah



*the fun
went to the Dixie College*

*We have had over in
sure you was sure a cute
cheer was "This book ro-
one win" & I'm sure that*

**One Half
Century
of** *always at Pat
Janice
Empoy.*

**Progress
1901-1951**



*the young people
dancing
and*

Administration Building





Flag Raising
Ceremony

Dear Jimmy,
I have enjoyed
having you back to
the same school
as I do. Your
a good kid and
really did
you. May the
best
happen to
yours always.
A friend
Sharon

Athletic Building



Dear Penny
 I was
 beginning to think
 I was not going to get
 to. Really yours
 I really enjoyed
 helping you get hard work in cheer
 leading well with all you have
 as well as every night I had
 as much fun as you tonight
 I hope to see you soon
 special friend
 Edmond



ADMINISTRATION

Dear Jerry,
 I don't have much time. Best of
 luck & success. ^{Seven} Remember me as
 one of your friends.
 Edmond



BOARD OF EDUCATION

Seated:—

SUPERINTENDENT MILTON E. MOODY; E. J. GRAFF, President; SHERMAN COOPER, Member.

Standing:—

RONALD McARTHUR, Clerk; DURWARD TERRY, Member; HEBER HIRSCHI, Member, and DR. W. J. REICHMAN, Member, who is absent.



NEWELL R. FREI

We, the students of Woodward High, pay tribute to our Principal Newell R. Frei, and the faculty who have so willingly and cheerfully helped us with our problems, listened to our troubles, and stood by us in time of success and failure. To them we give our humble thanks.

*Dear Johnny:
 You have done mighty
 well. I have a weakness for
 people who are methodical and
 systematic in their work, and
 shall always remember you.
 You are of the bright stars in
 my history class. Newell C.*

Eight

*But wishes
H.K. Miles*

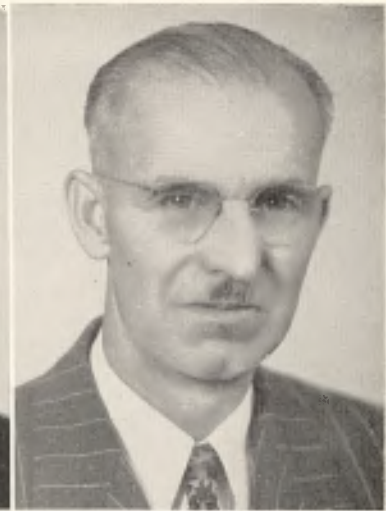


WALTER MILES
Citizenship
H. VAL HAFEN
Mathematics
CLARK HAFEN
English

VIOLA CORNWALL
Art
BETH SYPHUS
English
BETH SCHMUTZ
Dramatics

V. J. FREI
English
GRANT HAFEN
Science—Mathematics
STANLEY SCHMUTZ
Music

*1950-51
"Loving"*



ARTHUR PAXMAN
Science

LU REE G. PORTER
Homemaking

OWEN PENDLETON
Industrial Arts

REED BLAKE
Physical Education

GAYE ARMSTRONG
Physical Education

JAMES A. OTT
Journalism—English

BESSIE SNOW
Librarian

IRIS W. CROSBY
Secretary

STUDENT BODY OFFICERS

First Row, left to right:—

JERRY GRAFF

President

JOAN BENNETT

First Vice-President

Middle Row, left to right:—

RACHEL LYTLÉ

Second Vice-President

MARY HELEN CLARK

Commissioner of Publications

SHIRLEE HARRIS

Commissioner of Amusements

Bottom Row, left to right:—

RAYMOND CHRISTENSEN

Chief of Police

LORETTA McARTHUR

Girls' Athletic Manager

FRANK STAHELI

Boys' Athletic Manager

