

# Silver Reef Museum

**BUSINESS NAME**

**Mar. 23, 2019**  
**Sat. 10am- \$4.**



Lisa Michele Church is a local attorney and community historian who enjoys exploring roadside America. She regularly presents to a variety of scholarly and community groups on such topics as hand-made adobe brick homes, early 20th century apartment buildings, vintage roadside motels, and tourism development along the Arrowhead Highway in mid-20th century American West.

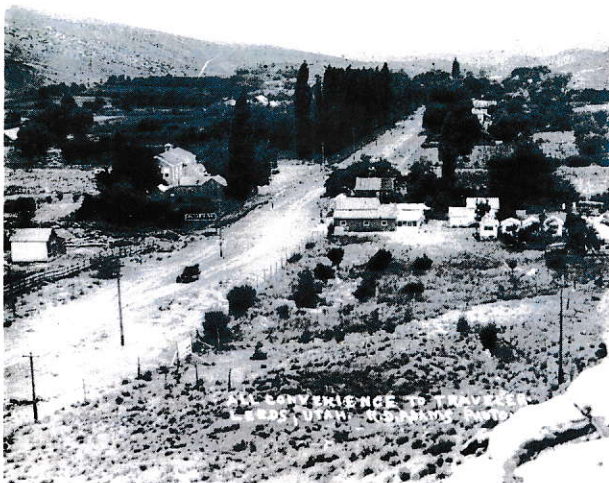
She loves vernacular architecture of motels, cafes, gas stations, and theaters. Her published work includes the books "Historic Salt Lake City Apartment Buildings" (2018) and "Sunlight and Shadow – The Page Ranch Story" (2017), along with numerous articles, photographic essays, and brochures. Her website [www.RelentlessHistory.com](http://www.RelentlessHistory.com) illustrates some of these efforts and research.

## Arrowhead Trail!

**Lisa Church- Presenter**

You can also follow her unusual posts featuring historic roadside and neon signs by visiting @relentlesshistory on Instagram. She is currently working on an article about women-owned beauty shops of the early 1900s in rural Utah and a book on Utah's historic neon signs.

Cost: \$4.00 ea (includes museum admission)  
Please register online here: <https://tinyurl.com/ArrowheadTrail3-23-19> or call 435.879.2254



### Silver Reef Museum

1903 Wells Fargo Road,

Leeds, UT 84746

Phone: 435.879.2254

Open: Mon. Thurs., Fri., Sat. 10am-5pm