

Sugar Loaf Cafe

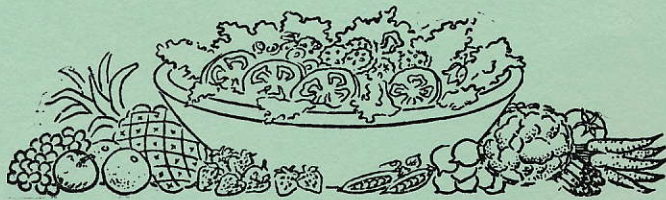
St. George, Utah

MENU

A LA CARTE MENU

Soups, a la Carte25
Homemade Chili Con Carne25

Salads



Combination Salad with Sliced Tomatoes (in season) 15

Pear, Pineapple, Lettuce and Shredded Yellow Cheese	70
Chef's Special Salad
Lettuce, Tomato and Cucumber Salad (in season)	60
Fruit Salad with Ice Cream	85
Cottage Cheese with Pear, Peach or Fruit Cocktail	65
Order of Sliced Tomatoes (in season)	30
Sliced Tomatoes with Lettuce Hearts (in season)	60
Potato Salad with Crackers	30
Tuna Fish Salad, Sliced Tomatoes	75

Crackers or Rolls and Butter Served with Salads

Sandwiches

Hot Hamburger	55	Hot Roast Pork	65
Steak Sandwich	75	Hot Roast Beef	65
Club Sandwich	75	Tuna Fish	35
Ham and Cheese	50	Cheese (grilled or plain)	30
Hamburger and Cheese	45	Cold Beef	35
Ham and Egg	50	Cold Pork	35
Bacon and Egg	50	Hamburger	30
Bacon and Tomato	60	Fried Egg	25
Tomato and Lettuce	40	Denver Sandwich	70
Fried Ham	45		

— We Reserve the Right to Refuse Service to Anyone —

A DUNCAN WINES:
SERVICE AMATEURISH

LAST NIGHT ON WAY HOME WITH KATH. & FRED.

ST. GEORGE, UTAH

Interesting Things To Know About Our Little City

On the main artery of coast to coast travel, the town is served by 8 bus schedules daily, going either way.

The water is unchlorinated and uncontaminated. Piped directly from a spring at the base of the Pine Valley Mountain, it never sees daylight until it comes from the tap, cool and pure.

The climate is pleasant. Spring stretches from early February, when fruit trees begin to bloom, until June. Summers are warm with a dry, healthful heat. Cases of heat exhaustion are unknown. Indian summer and fall last from September until Christmas. Winter is telescoped into a few nippy, invigorating weeks, with brief rains and snow so rare as to be headline news.

Semi-tropical fruits and nuts are raised here.

Visit the Mormon temple grounds and see this building at close range.

See the winter home of Brigham Young and the red sandstone Tabernacle.

Notice the ancient Court House, built when taxes were paid in produce, and on the same block the Odlum Memorial Building where there is a fine collection of relics. This is a gift of Mrs. Hortense McQuarrie Odlum, owner and manager of the Bon-wit Teller Store of New York City, in honor of her parents and her home town. — **Swim in the Municipal Pool.**

Did you know that one hour's drive will take you to Zion National Park? From there you may go on through the famous Zion-Mt. Carmel Tunnel on to Bryce Canyon and the Grand Canyon. In one day you may see world-renowned natural beauties. It's the experience of a life time.

One hour's drive will take you to Pine Valley, recreational area of mountain scenery, tall trees, cool streams, fishing and hunting. En route you pass the riot of color which is Snow's Canyon, two of the youngest and most perfect volcanic cones in the world.

Side Orders

Spinach20	Carrots20
Peas20	Mashed Potatoes & Gravy20
String Beans20	Hashed Brown Potatoes20
Stewed Tomatoes20	French Fried Potatoes25
Corn20		

Desserts

Sweet Roll10
Spudnuts10
Homemade Pie15
Pie a la Mode30
Ice Cold Fruits25
Jello15
Ice Cream, 2 scoops15
Pudding15

Beverages

Coffee05
Hot Tea10
Milk or Buttermilk10
Soda Water10
Iced Tea15
Hot Chocolate made with milk	.15

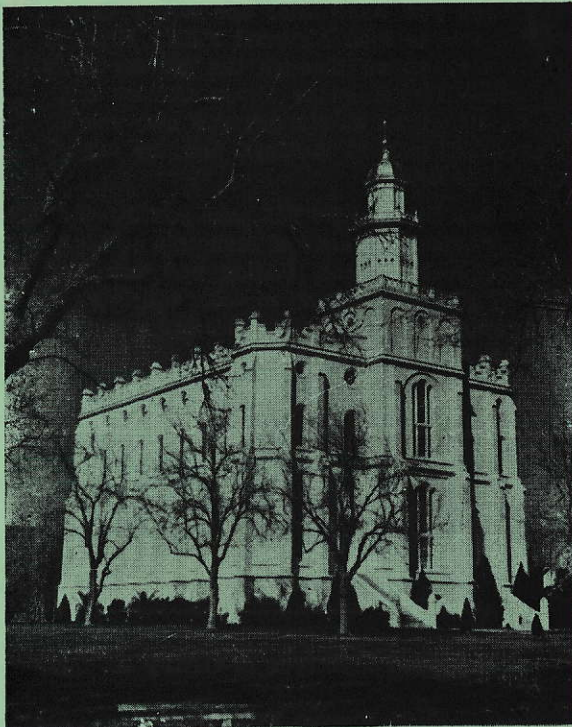
— Not Responsible for Lost Articles —

St. George, Utah

Population, 5200

Elevation, 2700

Industries: Turkey Industry, Cattle Raising, Diversified
Agriculture



ST. GEORGE L. D. S. TEMPLE

Finished in 1877, took 6 years to build. First Mormon Temple completed in the West. Located 5 blocks South and 1 block West of this Cafe. Information bureau on Temple grounds open during summer months from 8 a.m. to 9 p.m. Visitors welcome.

Why Do They Call It Dixie?

The first Mormons were sent to Southern Utah to raise cotton in an effort to make the early Mormon empire self-supporting. This area was then referred to as the "Dixie Mission". The cotton raising was successful on a small scale but after the Civil War the price of cotton dropped so low it was not practical to compete with the large Southern markets. Gradually the area converted to fruit and hay raising, in later years it has become the center of the blight resistant sugar beet seed industry with a \$2,000,000.00 crop.