

R13W

R12W

R11W

R10W

R9W

T38S

T38S

T39S

T39S

T40S

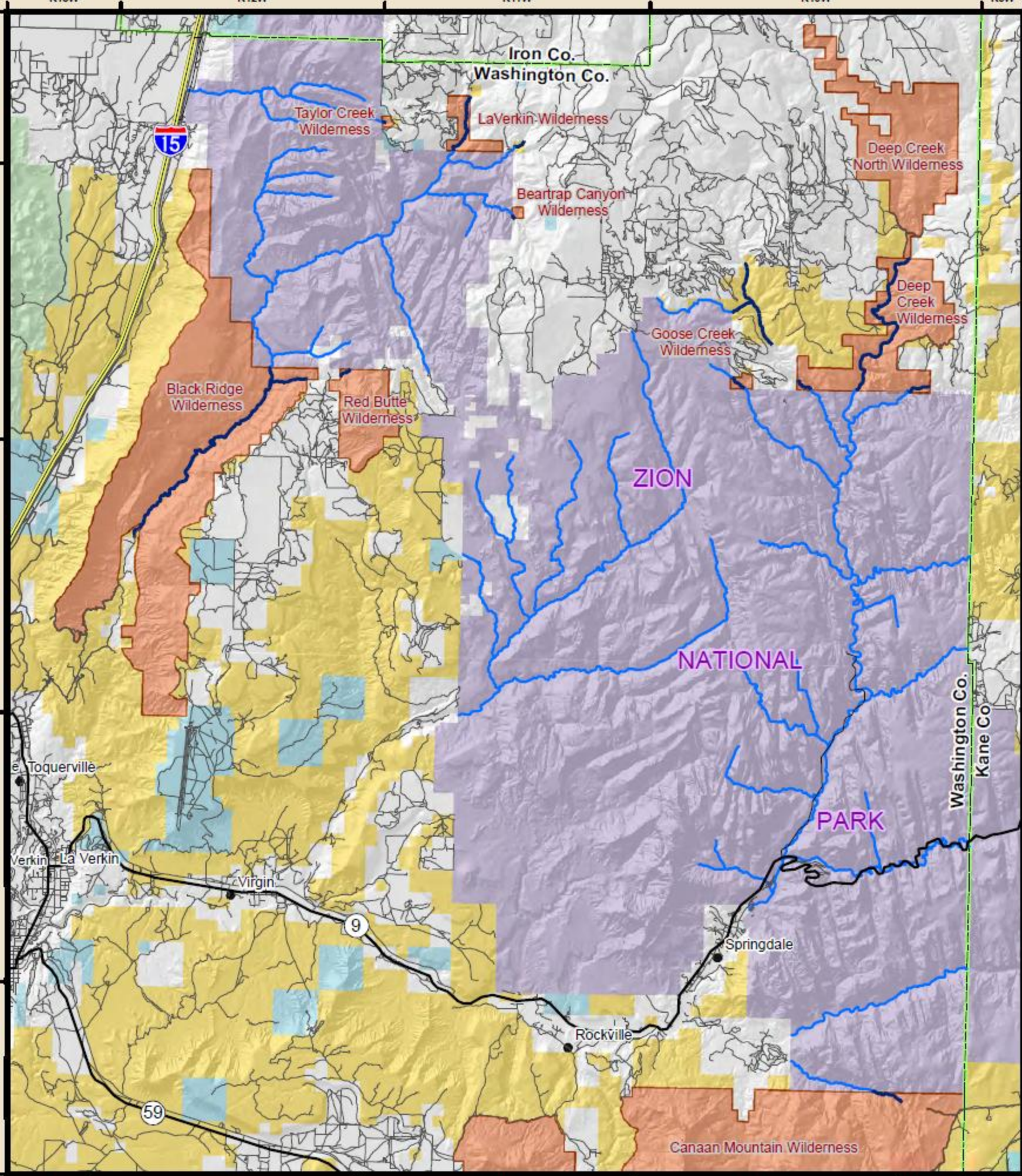
T40S

T41S

T41S

T42S

T42S



R13W R12W R11W R10W R9.5W R9W



Wild and Scenic Rivers

LEGEND

- BLM Segments
- NPS Segments
- Minor Roads
- New BLM Wilderness Area
- Bureau of Land Management (BLM)
- US Forest Service (USFS)
- National Park Service (NPS)
- State
- Private

1:184,192

This product may not meet BLM standards for accuracy and content. Different data sources and input scales may cause some misalignment of data layers.

