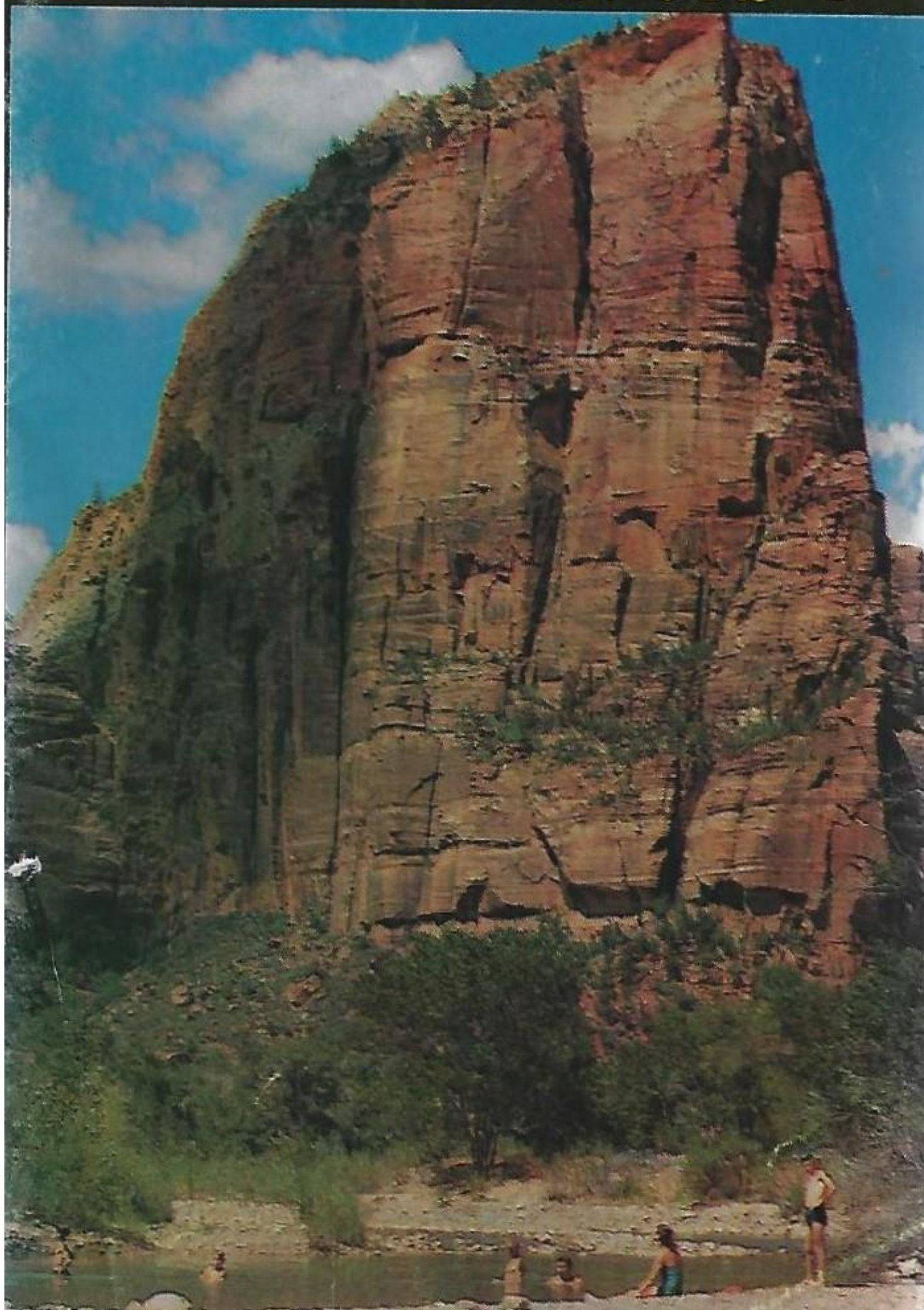


# St. George

## HIGH SPOTS

25¢





# *St. George, in Scenic Southern Utah*

St. George is a good place to live, a city of fine homes. It is a good place to stay, whether for a day or a number of months. Its advantages can be expressed in four "C's":

1. An ideal *Climate* of mild winters with no snow and a long growing season.
2. *Color* in the hills around and in the fantastic formation, hues that deepen the bloom in the evening light in unbelievable brilliance.
3. It is *Close* to many areas of interest and beauty—Snow's Canyon just a stone's throw away, Pine Valley Mountain with its tall timbers, its fishing and hunting, and Zion National Park of world renown.
4. Accommodations that have *Class*, and that fit every need.

St. George was settled in December 1861 by a group of 300 families "called" to raise cotton, sugar cane, and other semi-tropical crops.

When the founders laid out the town, they reserved three areas, one for the Temple, the symbol of their religious devotion; one for the Court House which would identify them first of all as American citizens; and a public square which was the center of educational and civic activity.

Today the town retains these basic values, but has expanded its recreational areas to include the Sun Bowl, the base ball park, the public swimming pool and picnic areas near it. Dixie College is also fast moving to a large new campus to the east of town.

With its Centennial fast approaching, the City Fathers of St. George are already launching long-range plans for a fitting celebration in 1961 culminating in December.

**CITY OF ST. GEORGE**

**Chamber of Commerce**





*Where the Summer Sun*

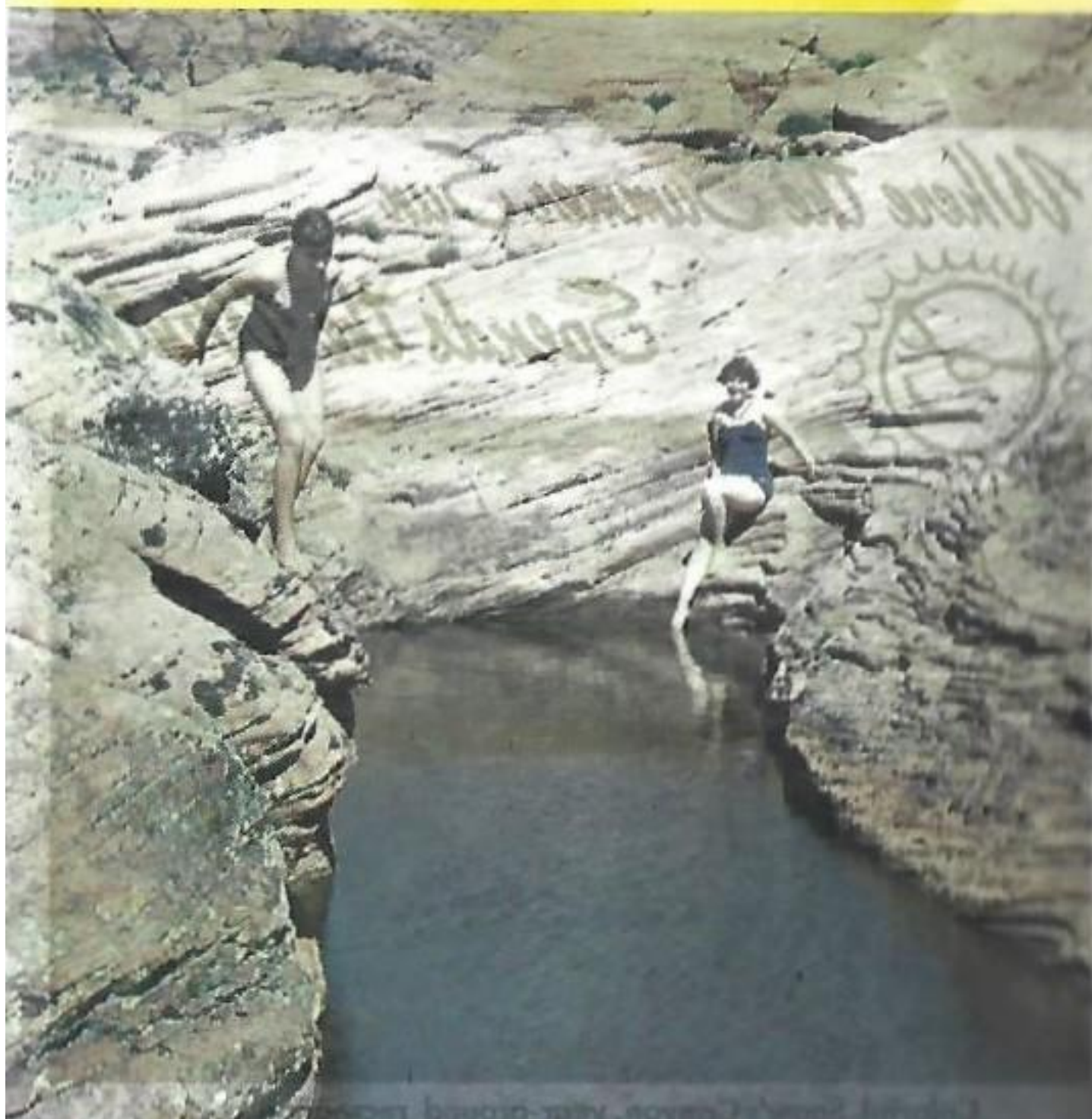


*Spends the Winter*



**Colorful Snow's Canyon, year-around recreation center**









# *Welcome to St. George*

It is indeed a pleasure to welcome you to St. George and to the state of Utah through its southwestern gateway.

We invite you to stay overnight here, to spend a few days or a week, or to spend the rest of your life.

Many travelers find St. George a convenient halfway point to spend the night when making the trip between Salt Lake City and Los Angeles. Excellent facilities for the overnight visitor are provided by our hotels and motels, our cafes and restaurants, and our service stations and garages.

Those who can spend a few days in the area, find St. George an excellent headquarters for trips to the many scenic points in the regions.

The city has excellent parks and recreational facilities. Movies are frequently filmed in the region so don't be surprised if you see Hollywood or television celebrities on our streets.

Zion Canyon and Bryce Canyon National Monuments are visited by thousands of tourists who stay in St. George. Snow Canyon on the west, the old mining town of Silver Reef on the north, and the scenic Zion-Mt. Carmel drive on the east will delight visitors.

Much of the history of St. George involves the struggles of pioneer members of the Church of Jesus Christ of the Latter Day Saints to farm in the valley of the Virgin River. You may wish to visit the old cotton mill in Washington or see the grounds and the beautiful tabernacle in St. George.

Those who want to spend the rest of their life here will find this a wonderful place to live. Many retired people come here because of the excellent climate. Others come for the abundance of opportunity.

Whatever the reason you come, regardless of how long you stay — you will meet the world's finest people. If there is anything any of us can do for any of you to make your stay more pleasant, more enjoyable and more memorable; please feel free to call on us.

Sincerely  
William A. Barlocker  
Mayor of St. George





## Recreation

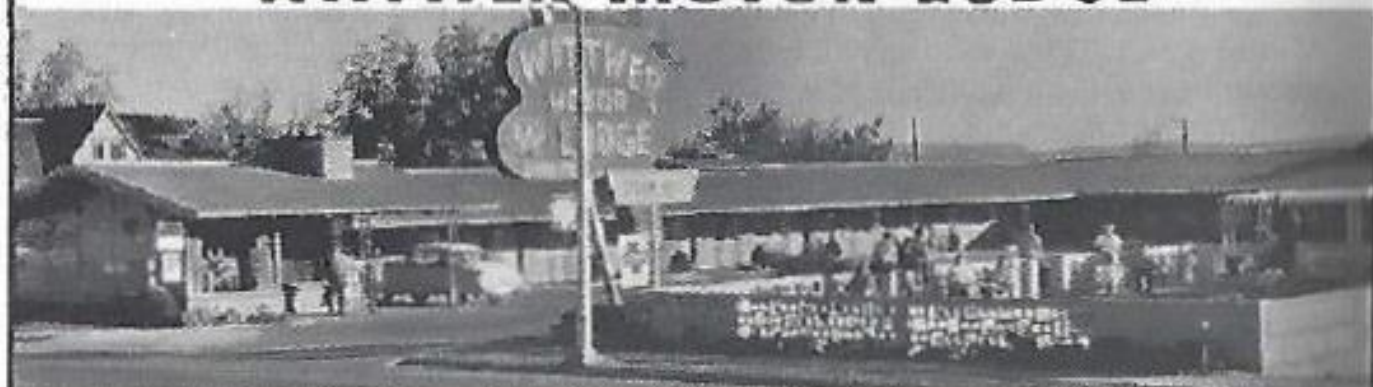
In addition to the extensive youth and adult activity program of the Mormon Church, the city maintains a municipal swimming pool, a beautiful park with picnicking facilities, a night baseball park and the Dixie Sun Bowl where various activities, including the annual three night Lions rodeo and annual dance festival are enjoyed.

Horseback riding is popular in this area, and a pony golf course is in the making. The Sheriff's Posse also maintains a track and schedules race meets.

A Little Theater, with modern center staging, is open during the summer months. The McQuarrie memorial building contains most of the historical objects and data of the county.

Although this area is not well known for its fishing, it offers considerable sport for the anglers, both in the streams and in various lakes and reservoirs.

## WITTWER MOTOR LODGE



One of Utah's Finest — 25 Deluxe Units — Wall-to-Wall Carpeting — Family Units

Tile Baths — Tub or Shower — Pets Allowed — Beautiful Heated Swimming Pool

PHONE OR 3-3541

Lester & Vanota Wittwer, Owners

ST. GEORGE, UTAH





Slightly more than two miles beyond Snow's Canyon, to the right of the highway, is Dameron Valley.

## DIXIE STATE PARK

Seven miles north of St. George on Utah highway 18 the traveler gets his first spectacular rim view of Snow Canyon, the central attraction in the newly created Dixie State Park. Less than a half mile north of this view point, a sign points the way to the road through this colorful canyon. Lovely to view at any time of day, this region affords a number of breathtaking vistas for the color photographer, especially during the early morning and late afternoon. Call at the Chamber of Commerce office for the most recent information on this beautiful area, which has been given high priority for immediate development by the Utah State Parks and Recreation Commission.

Because of its magnificent and colorful scenery, the St. George area is becoming more and more a favorite location for the filming of outdoor and Western movies. Many companies are taking advantage of the almost limitless range of terrain from arid deserts to the alpine meadows of its lofty mountains. The Snow Canyon area has been the choice of a number of these companies. The drive through the canyon makes the remains of one of the movie sets, the site of "A King and Four Queens," easily accessible.

Within four miles of the Snow Canyon junction, north on highway 18, are two beautifully symmetrical volcanic cinder cones, so recent in origin that they are believed to have erupted within historical times.

*Where Food and Service Are the Best!*

**BIG HAND CAFE**

Especially Good Food — Steaks, Chops, Sea Food, Fried Chicken

Western Greyhound Bus Depot - Ticket Office      Free Parking - West or East

OR 3-2441 — G. E. Pace, Manager





### BOSTWICK TEXACO SERVICE

GAS — OIL — LUBRICATION — BATTERIES  
TIRES



OPEN 24 HOURS

Complete Tune-up and Brake Service  
Diesel Fuel and Service

Ph. 332 - St. George - 551 N. Bluff

St. George is a favorite location  
for western movie making.

### SCHMUTZ CONOCO SERVICE

ST. GEORGE, UTAH



*We Pick-up and Deliver*

ENGINE TUNE-UP — TIRES — BATTERIES  
LUBRICATION — WASHING

East End of Town on Highway 91

### CONOCO Prisbrey CONOCO Conoco Super Service

*We Pick-up and Deliver*

Engine Tune-up • Tires • Batteries  
Lubrication • Washing



229 East Highway 91

St. George, Utah

Orchard 3-9971

## NEW COLONIAL MOTEL



Swimming Pool

15 Deluxe Air-Conditioned Units — Family Accommodations

Adjoining Cafe and Station

Claude and Max Clark

OR 3-3549





## THE UTE RANGERS, WHO PERFORM DURING ST. GEORGE LIONS' DIXIE ROUNDUP

All of the net proceeds of the show are used to build new community projects such as the Little League Baseball Park; Maintain community facilities previously built by the Lions Club, such as the Dixie Sun

Bowl, or participate in organized charities such as the Lions Sight Conservation program.

None of this would be possible without the full cooperation of the majority of the people of this area who support the show.

### **HOTEL LIBERTY & CAFE**

"IN THE CENTER OF TOWN"



Clean, Comfortable • Excellent Food  
• Reasonably Priced • Breakfast  
• Phones • TV • Lunch • Dinner •  
Ph. OR 3-3557 — Tourist Information  
Families Welcome—V. R. Leaney, Owner-Opr.  
Mr. and Mrs. E. Cooper, Mgr. Cafe  
**ST. GEORGE, UTAH**



### **LARGEST POOL IN TOWN**

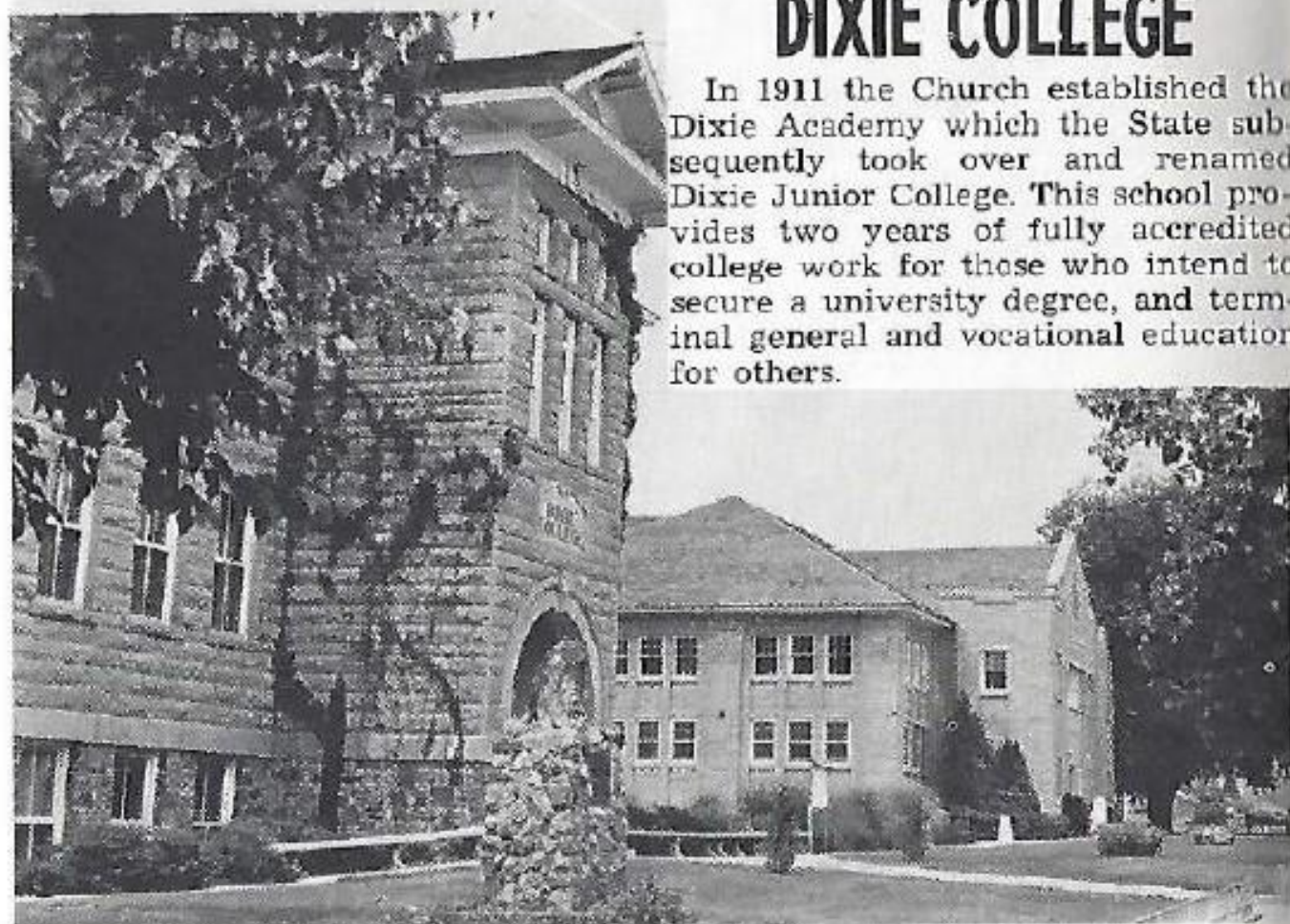
- Air-Conditioned
- Singles — Doubles — Family Accom.
- Phones — TV In Rooms —
- Reasonable Rates

"One of Utah's Finest"



## DIXIE COLLEGE

In 1911 the Church established the Dixie Academy which the State subsequently took over and renamed Dixie Junior College. This school provides two years of fully accredited college work for those who intend to secure a university degree, and terminal general and vocational education for others.



## RUGGED WEST MOTEL



22 Modern, Air Conditioned Units each with  
Shower, Electric Heat, Wall-to-Wall Carpets, Some Kitchenettes  
**ADJOINING BIG HAND CAFE — U. S. 91 — ST. GEORGE**

ORCHARD 3-2401

AT THE STOPLIGHT

GLENN PACE, Manager



## WHILE IN THE ST. GEORGE AREA . . .

### Be Sure to Visit . . .

**SNOW'S CANYON**, the New Dixie State Park nine miles northwest of St. George via the newly paved Highway 18.

**ENTERPRISE RESERVOIR** About an hour's drive from St. George, a happy-hunting-ground for the fishermen. Its stored water irrigates the rich farm lands of the once-arid Escalante Desert.

**SILVER REEF** The ghost town which lies north-west of Leeds. One of the two places in the world where silver has been found in sandstone, its ruins mark a vivid chapter in the history of the old west.

**NEW DIXIE COLLEGE CAMPUS** where four new buildings have been built. Excellent facilities for education through the first two years of College.

**BRIGHAM YOUNG'S WINTER HOME**. Where the great Mormon Leader spent his winters. Soon to be restored.

**THE GLEAMING WHITE MORMON TEMPLE**. First Mormon Temple to be completed in Utah, completed in 1877 at a cost of \$800,000, a beacon for passing planes, as well as the first landmark glimpsed by tourists upon entering the valley.

**THE UNIQUE ST. GEORGE LATTER-DAY SAINTS TABERNACLE** one of the most perfect examples of architecture in the world.

**THE DIXIE SUN BOWL** where various activities are enjoyed including the annual three day Lions Rodeo and annual dance festival.

**THE MOUNTAIN MEADOW MASSACRE SITE** where in September 1857 a wagon train of emigrants en route from Arkansas to California were murdered by Indians and/or whites.

**THE INDIAN PETROGLYPHS** at the southernmost tip of the Black hill below St. George and across the river near Bloomington . . . and still others near Santa Clara.

And of course . . .

ZION NATIONAL PARK, NORTH RIM OF GRAND CANYON,  
BRYCE CANYON NATIONAL PARK AND  
CEDAR BREAKS NATIONAL MONUMENT.

**WHEREVER YOU ARE GOING IN SOUTHERN UTAH . . .  
YOU'LL FIND ST. GEORGE CONVENIENT TO ALL.**



***El Peso Motel***  
"One of Utah's Finest"



You Pay No More — 30 New De Luxe Air-Conditioned Units

• Family Accommodations • Beautiful New Pool for Your Pleasure  
Elmer Widic, Owner-Mgr. American Express Hilton Carte Blanc



## GLEN CANYON DAM

The visitor to Utah through its colorful southwestern gateway can add another "must see," to his already long list of scenic wonders — the \$423,000,000.00 Glen Canyon Dam. Whether the visitor sees Bryce Canyon, Zion Canyon, or Cedar Breaks — or all three — enroute, the approach will be a memorable one. To the masterful scenery of the Glen Canyon area, where Father Escalante pioneered in 1776, this generation is also making history in an engineering fete which will revolutionize the future destiny of the surrounding region. At any season of the year, and at any stage of its development, the trip to the Glen Canyon Dam will be unforgettable.



Bridge at Glen Canyon Dam



The LaVerkin Bench.

### *Dairy Freez*

ST. GEORGE, UTAH



CHICKEN

Hamburgers

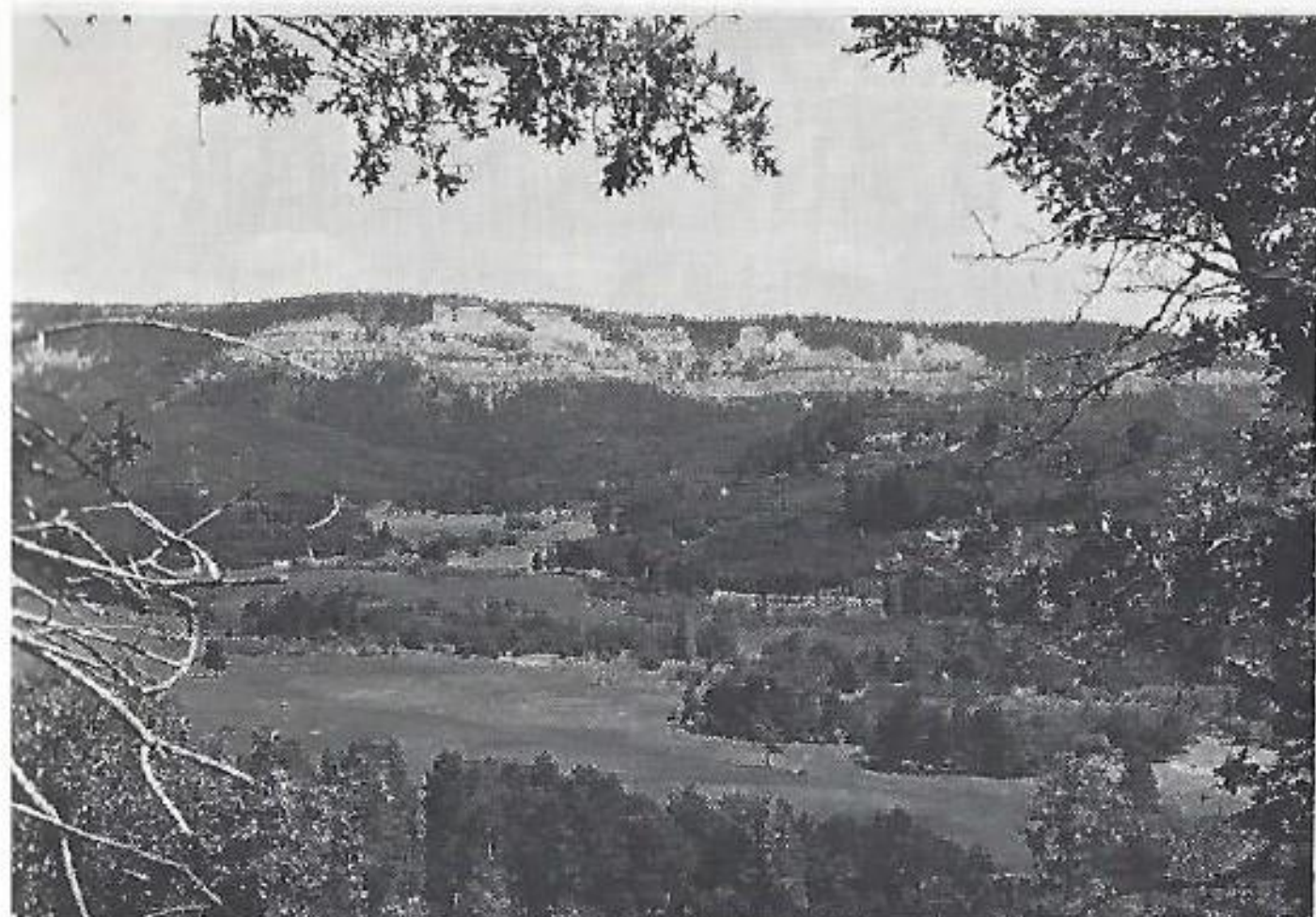
Foot Long Hot Dogs

French Fries

Malts—Shakes—Sundaes—Cones

Located on Hwy. 91 West





This section of Utah offers many scenic drives

FOR THE FINEST



# WISHBONE CAFE AND BROILER

**Excellent Foods — Breakfast — Lunch — Dinner**  
Foods You Really Enjoy — Steaks — Chicken — Sea Foods  
Center of Town — Mr. and Mrs. Claud Halsell  
**ST. GEORGE, UTAH**



# MEADOW HOLLOW ROD AND GUN CLUB



**Deer Hunting – Mountain Lion**  
15,000 Acres – Closed – Private Property

Limited to 20 Member Hunting Party

**Guides – Horses – Jeeps**

Transportation furnished from Cedar City Airport

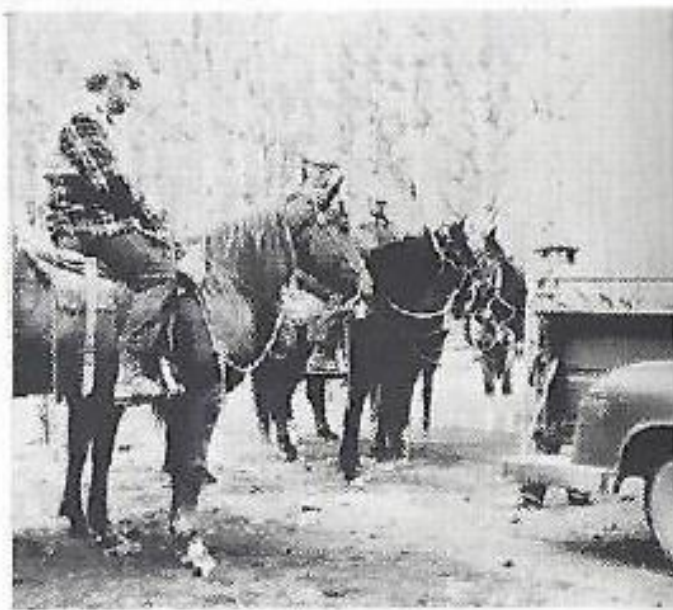
— INFORMATION FROM —

**ROWAN – GARY WILLIAMS**

KANAARVILLE, UTAH

Phone JUniper 6-9175

100% KILL EVERY YEAR





# DEERHUNTING AT ITS BEST IN SOUTHWESTERN UTAH



## HUNTSMAN'S DEER LODGE — UTAH'S FINEST —



100% Kill past 10 Years  
Transportation furnished from Cedar City Airport  
— WRITE FOR INFORMATION —

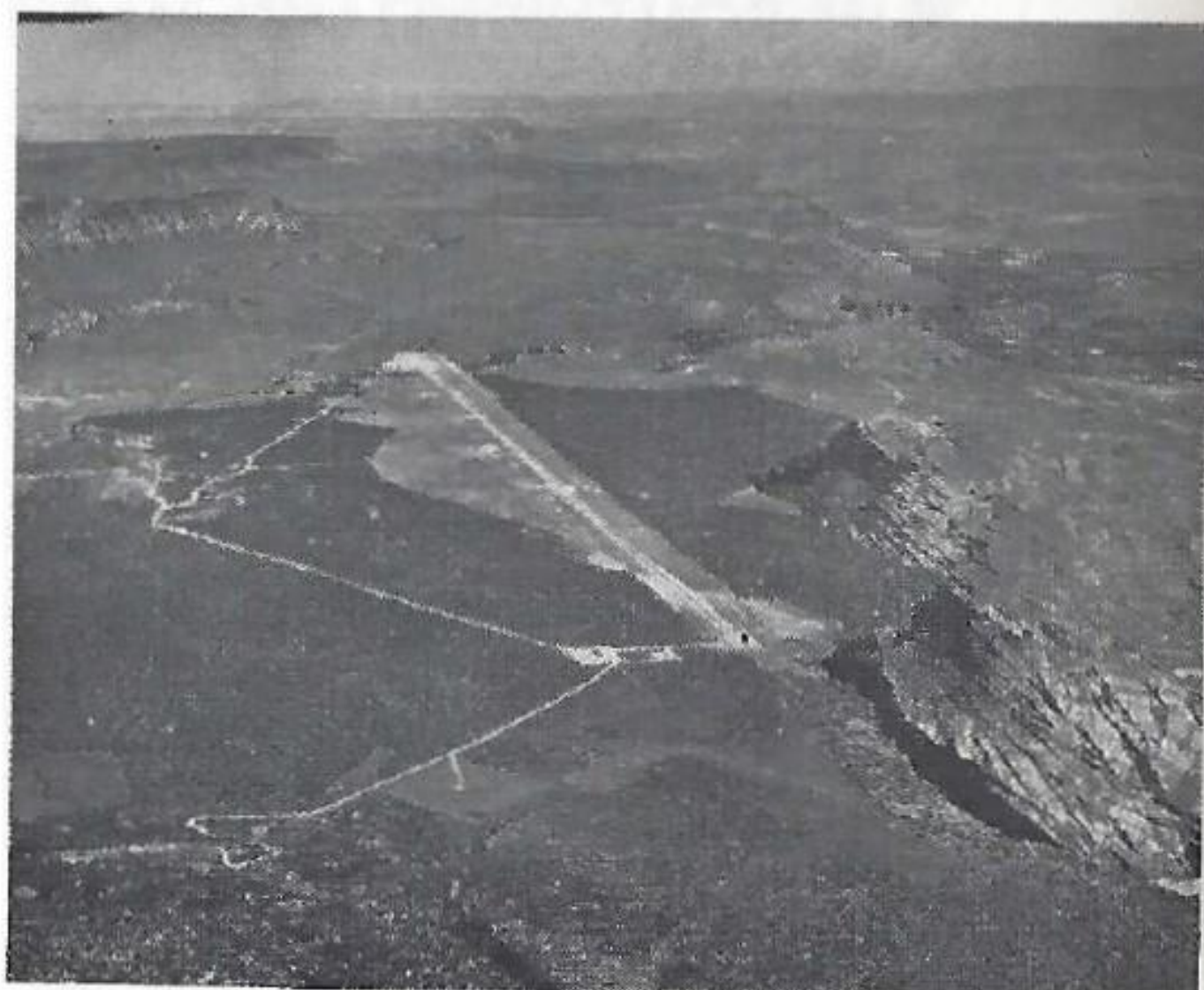
**HUNTSMAN'S DEER LODGE**

**CANNON HUNTSMAN**

**NEW HARMONY, UTAH**



## PROJECT "SMART" ON HURRICANE MESA



This photo of the Supersonic Military Air Research Track was taken from the air looking southwest toward Hurricane and LaVerkin, Utah.

### JERRY'S CAFE

"Good Place To Eat"  
IN HURRICANE

THAT  
YOU'LL LIKE



- Breakfast • Lunch • Dinner
- Sandwiches • Orders To Go
- Fountain Service

Eloise & Lamar Bringham  
Phone 3-9998 Hurricane, Utah

### ACE CLUB



Ice Cold Beer — Soft Drinks  
Candy — Cigarettes — Pool

Ace and Marva Palmer

½ Block North Highway 17  
HURRICANE, UTAH



### The WHEEL ROCKS • SOUVENIERS

Beautiful Antiques • Costume Jewelry  
• Nursery Stock

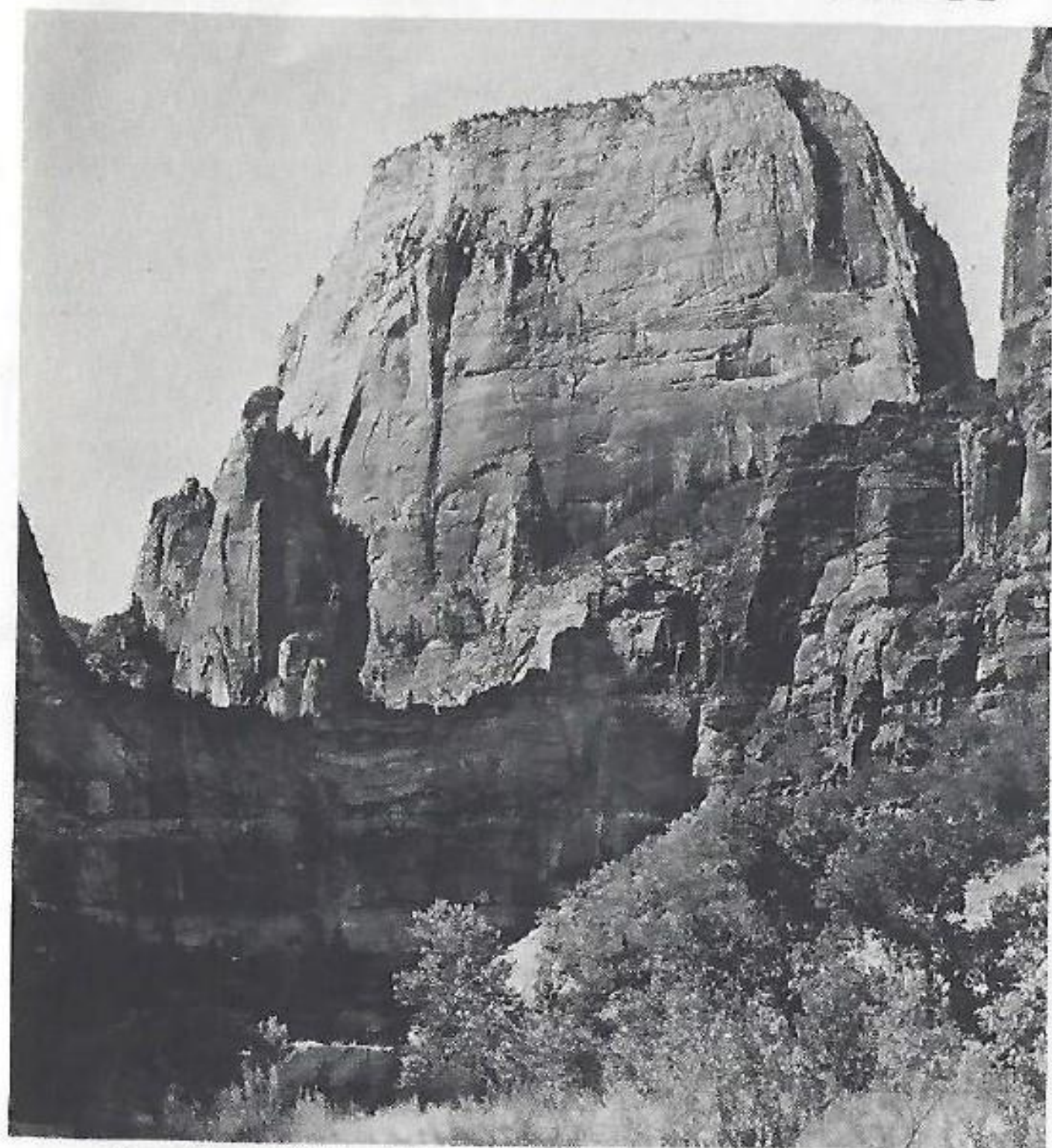
Outstanding collection of Stones, Rocks  
Local Fruit and Nuts For Sale

Come in Friends!  
Visit Newell & Rose Frazier

**THE WHEEL**  
HURRICANE, UTAH



# ZION NATIONAL PARK



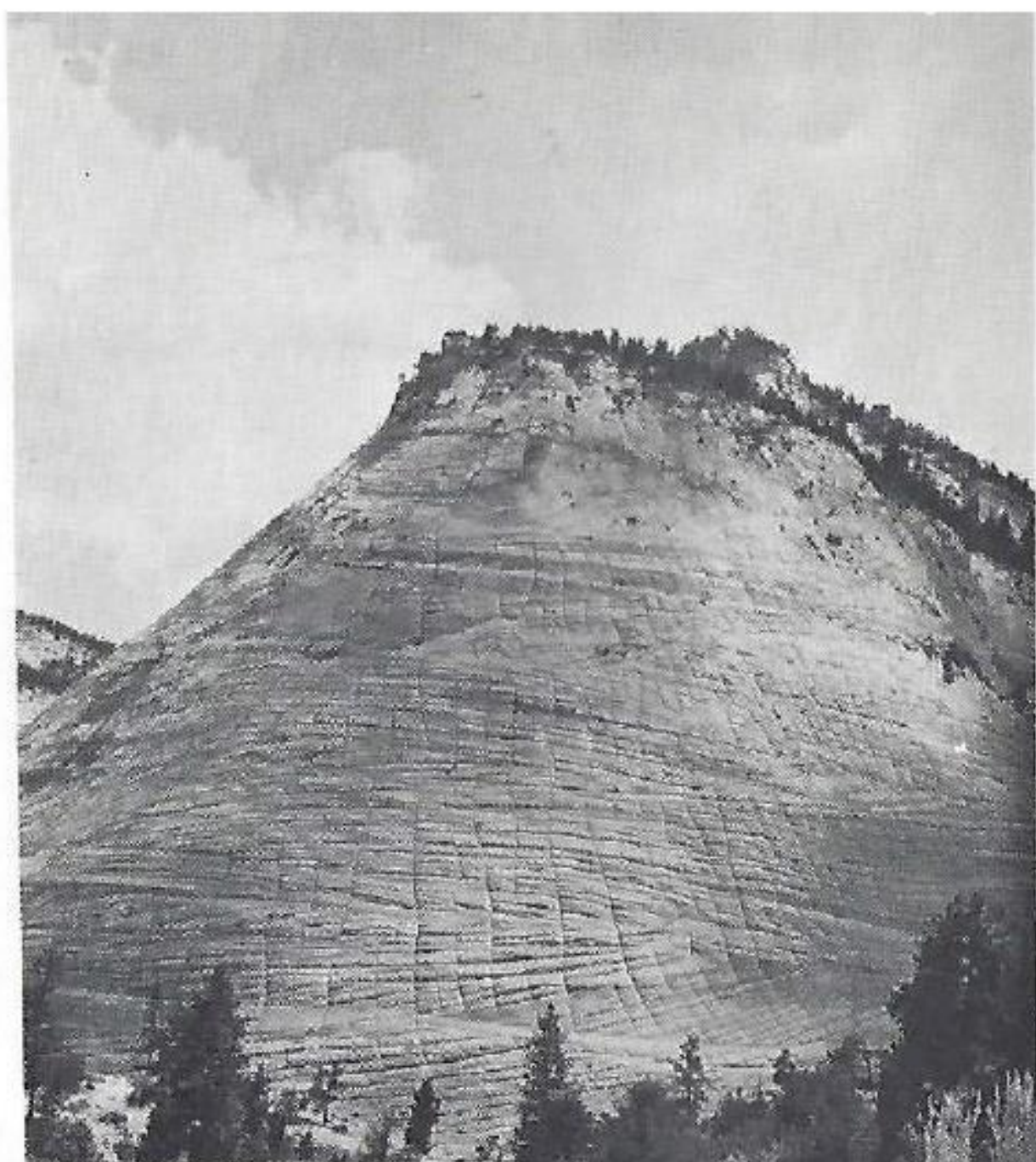
The Great White Throne in Zion National Park, Utah,  
Is a Majestic Sentinel of Beauty

Beyond the Great White Throne, the river and road veer to the west at the Organ behind which Angels Landing rises 1,500 feet above the canyon floor. Here is an advantageous place to view Cable Mountain on the right. As you drive on, Cathedral Mountain looms into view to the west. Observation Point and the Pulpit rise to the right and left, respectively, before the road ends at the Temple of Sinawava. Here a trail leads to The Narrows where the canyon actually narrows to a 1,500 foot chasm only a few feet wide in places, with overhanging walls.

Spectacular multicolored Zion Canyon, one of the awe-inspiring portions of Zion National Park, has been described as "the best known example of a deep, narrow, vertically walled chasm readily accessible for observation."

The park is a unit of the National Park System, and covers about 143,294 acres.





### Zion National Park

*Checkerboard Mesa along the East Entrance Highway. Wind-carried sands in the geologic past formed cross-bedded deposits. As the region sank and was covered by a great sea, these sands were cemented into what is now known as the Navajo Sandstone. A later uplift of the land, with exposure and drying of the cementing materials, caused vertical weathered cracks or joints to appear, giving the checkerboard effect.*

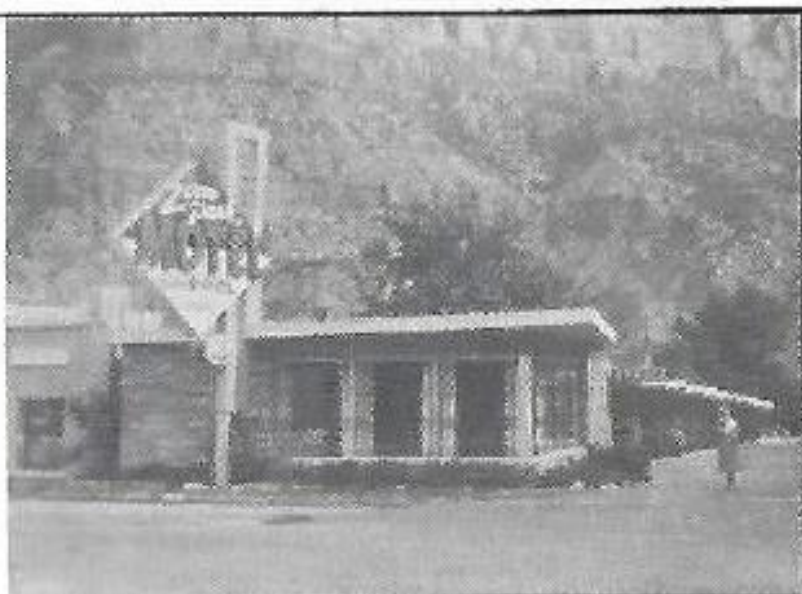
## ZION PARK MOTEL AND TRAILER VILLAGE

ZION NATIONAL PARKS NEWEST & FINEST  
"A Gem of a Place"

The ideal spot for your headquarters while visiting Zion, Bryce, Grand Canyon, National Parks.

Cedar Breaks • Dixie National Forest  
Playgrounds

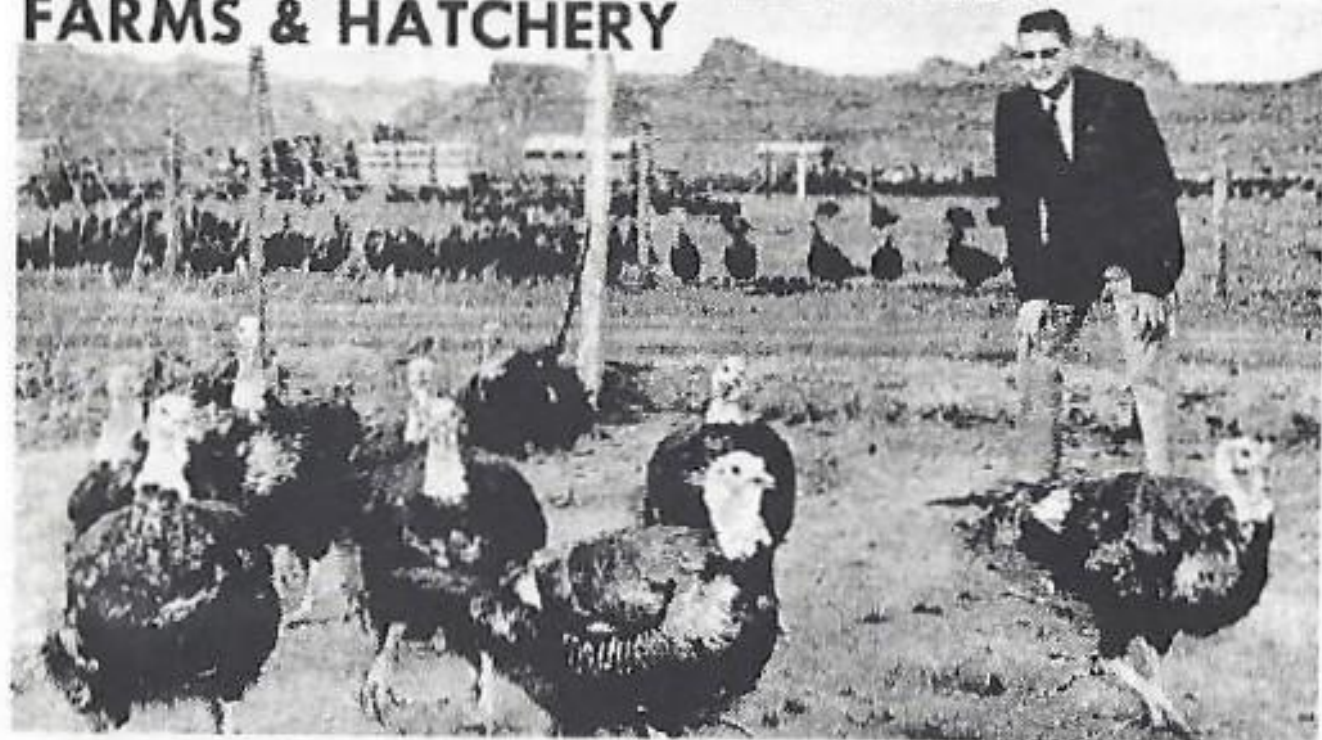
Drive out to these incomparable wonderlands during the day and return to your Zion home for rest and refreshment in the evening.





# BARLOCKER

## FARMS & HATCHERY



***All breeder toms and hens are carefully selected and tested for conformation***

Now Barlocker Farms and Hatchery are prepared to offer their latest feature — the new Hybrid Outcross BVX. Commercial eggs and poults are now available from this three-bloodline cross. Designed for rapid growth, this new hybrid gains approximately one pound for  $3\frac{1}{4}$  pounds of feed. The Outcross BVX was developed through 10 years of trapnesting and intensive selection for conformation. *The BVX is not recommended for breeding stock.*

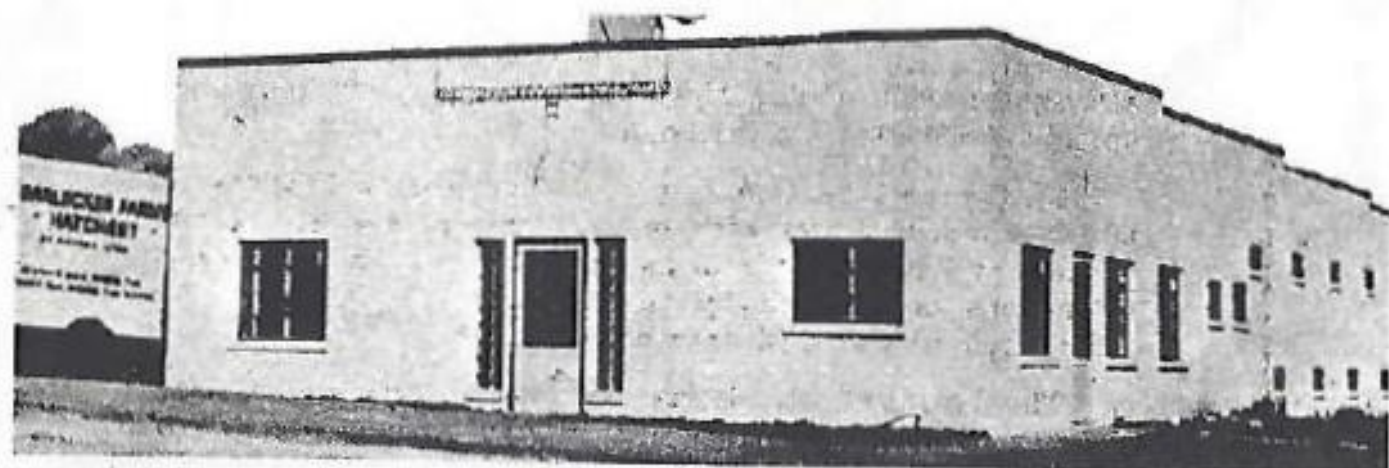
### **SPECIAL MATING PENS**

Barlocker's special mating pens are made up of high egg-producing families, with 75 to 80 per cent production for a five-month trapnesting period. There has been no

broodiness for five generations, and all stock is from ROP and ROM matings. Hens weigh in to pens at 20 pounds, or more, at  $7\frac{1}{2}$  months; toms weigh in at 38 pounds, or more, at  $7\frac{1}{2}$  months.

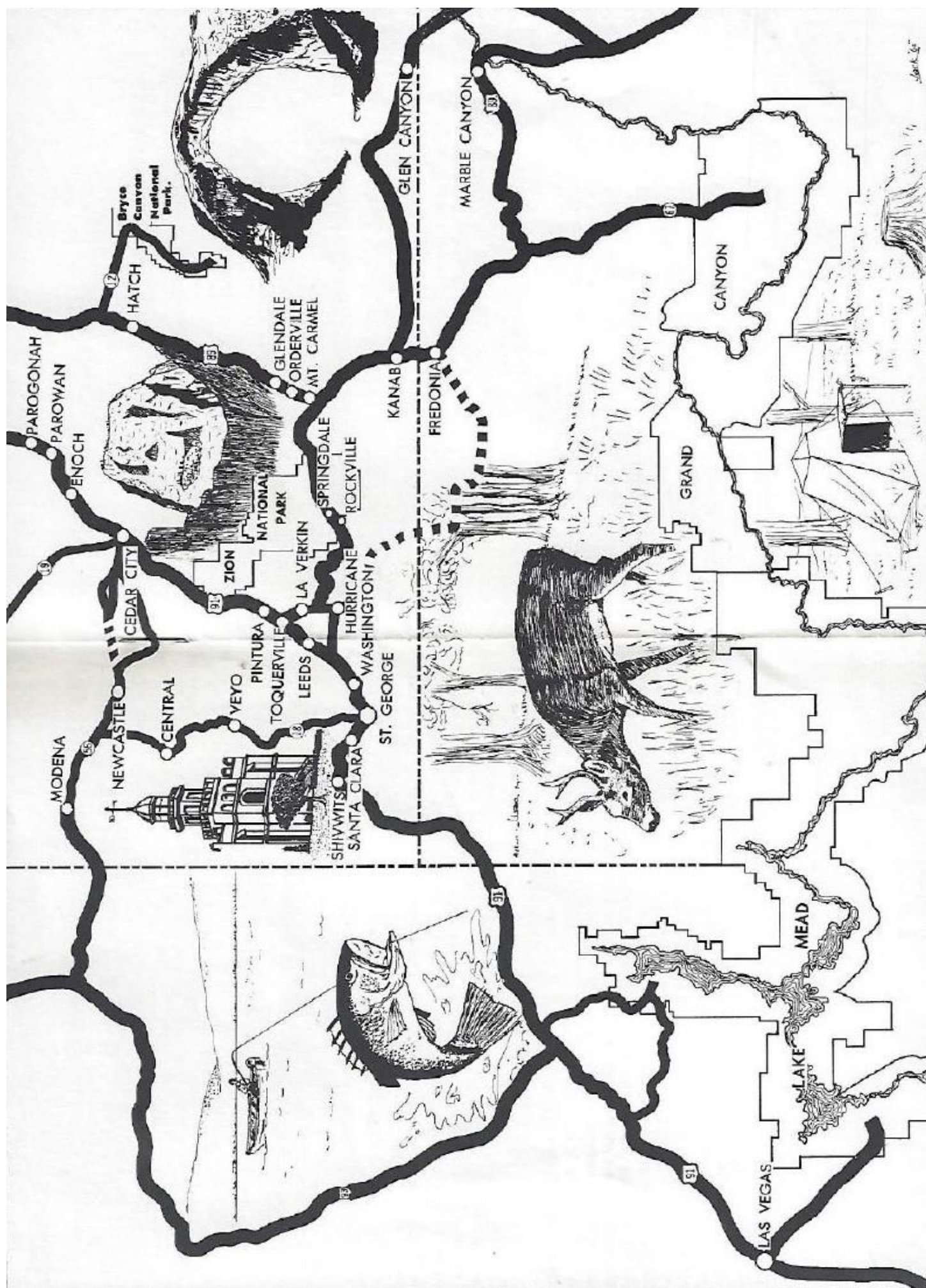
### **EGGS AVAILABLE**

Barlocker offers eggs this year from foundation stock of five years' non-broodiness in a Broad Breasted Bronze strain. These eggs are from ROP and ROM matings, with the breeders showing a clean bill of health. No evidence of sinusitis or mud fever has been in Barlocker breeders for the past 11 years. They are pullorum clean. In addition, Barlocker offers eggs from two and three-year-old ROP and/or pen-mated stock.



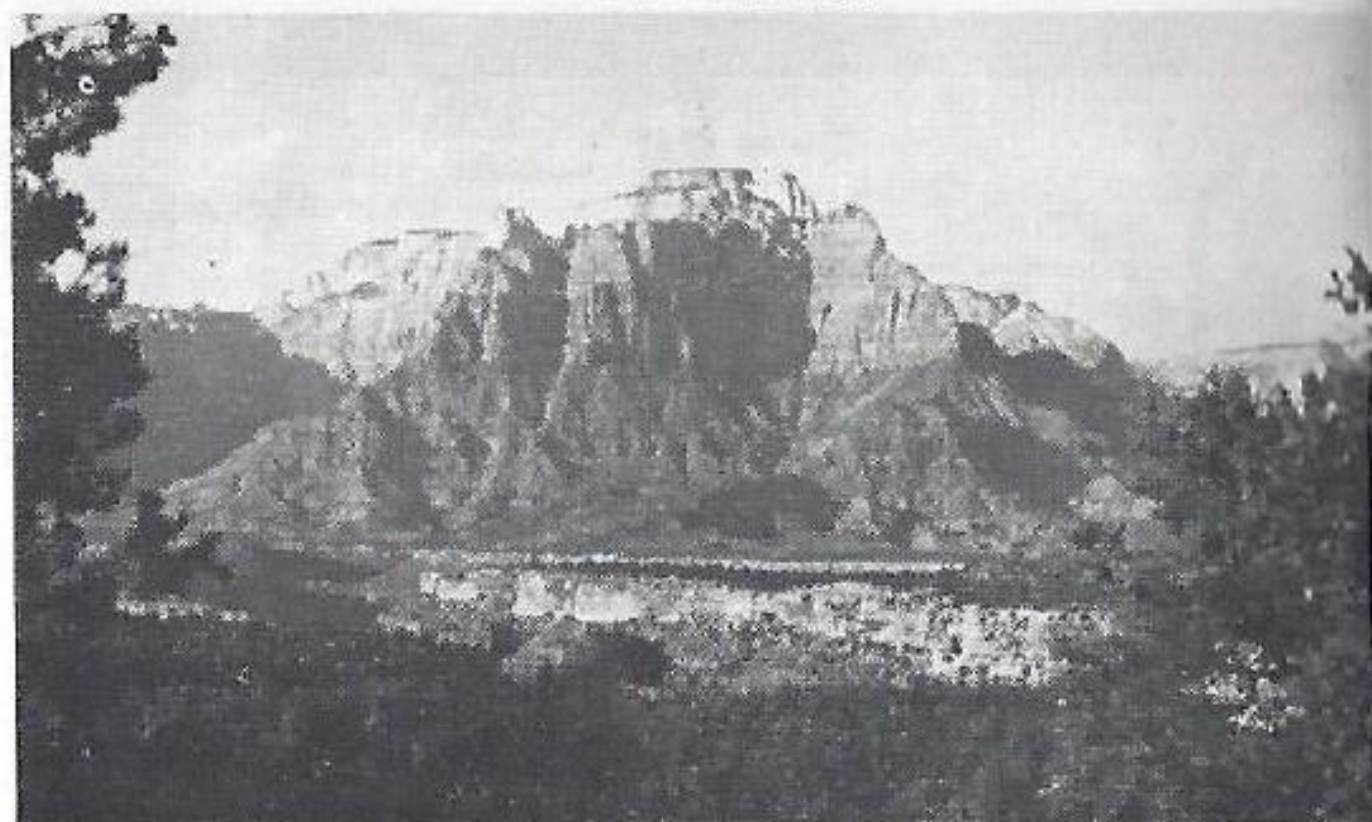
**BARLOCKER FARMS AND HATCHERY** St. George and Enterprise, Utah







## WEST TEMPLE



The above beautiful view of West Temple in Zion National Park can be seen from the Rockville Dugway an hour before sundown.

Zion National Park was probably first discovered in 1858 when Nephi Johnson, prospecting in southern Utah for soil in which cotton might grow, stumbled upon the tangle of chasms, canyons, and truncated mountains. Ignoring the setting in which he found himself, Mr. Johnson reported only that growing cotton in the canyon bottoms would be impractical.

The Piute Indians called this canyon I-oo-gune — meaning “like an arrow quiver.” Some early settlers of the region maintained that the Piute had a superstitious fear of the place, but there is also reliable evidence that they raised corn here and the remnants of an ancient trail onto the rim is still discernible in the vicinity of Weeping Rock.

The Mormons named this region “Zion” interpreted as “the heavenly city of God.” They reminded canyon visitors that the journey into the narrow canyon, with its “towering temples of stone,” or “houses not built with hands,” should be something of a soul-stirring experience. Thousands have attested that it is.

### ZION REST MOTEL



14 Beautiful Units in the  
“HEART OF ZION PARK”

1500 Yards from Park Entrance

Complete Texaco Service While You Sleep

S&H Green Stamps • Motel and Service

John & Natalie Dratter, Your Hosts

### CANYON MOTEL

Sleep In the Shadow of The Watchman  
½ Mile from Zion National Park  
Heated and Air Conditioned

11 MODERN UNITS

Your Hosts: Joe & Nony Nielsen

SPRINGDALE, UTAH





East Temple, in Zion National Park.

### **TERRACE BROOK LODGE**

6 Modern Units — Including Family Unit  
Patio - Cool Shaded Location

Mr. & Mrs. John E. Excell  
Owners and Operators

Hwy. 15 West      Springdale, Utah

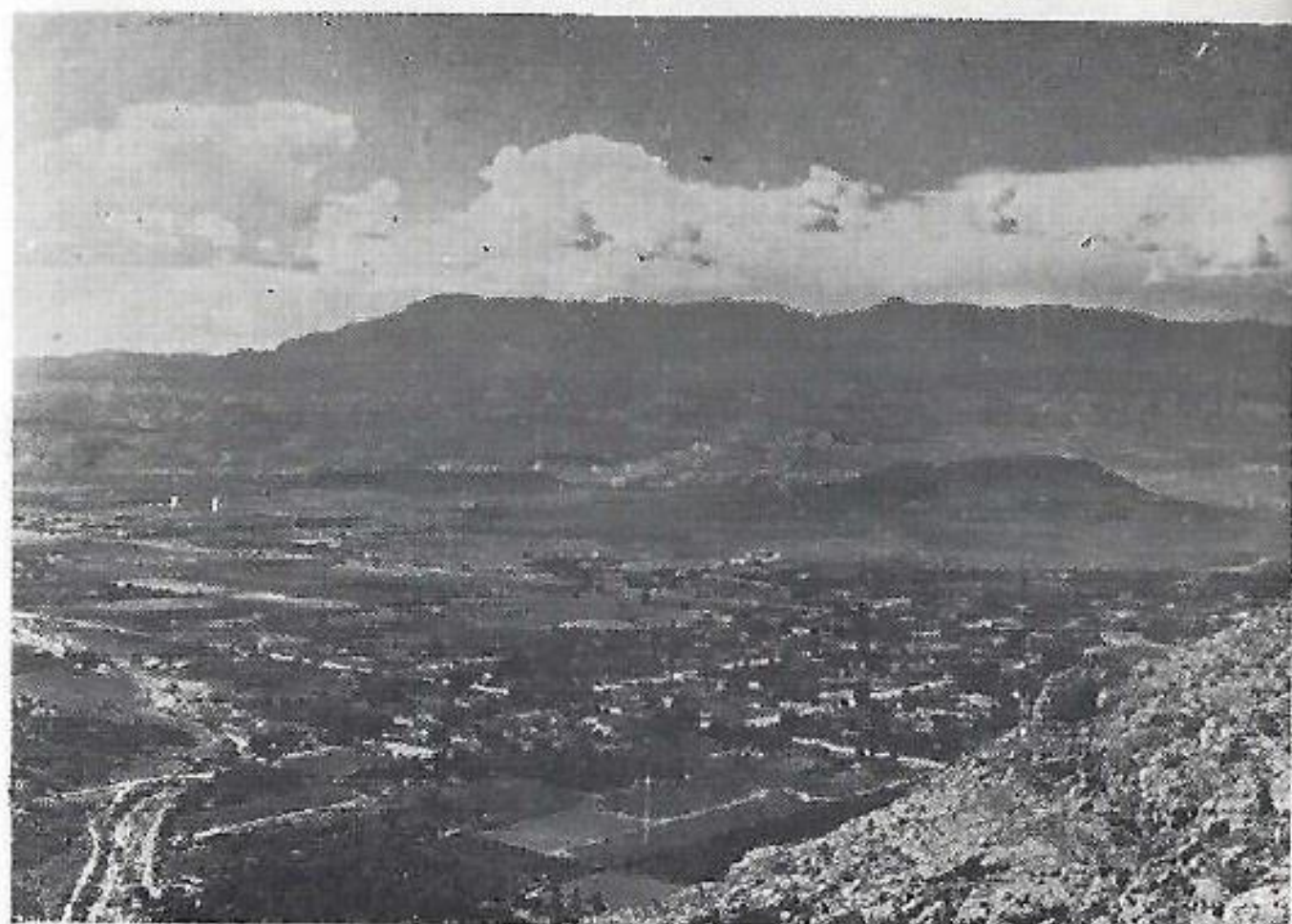


### **ROCK SHOP**

AGATE - GEM MATERIALS  
ROCK SPECIMENS  
MANSENTA LAMPS  
Hand Made Rock Jewelry  
ROCKVILLE, UTAH



## VISTA OF HURRICANE VALLEY



### Hurricane Is a Pleasant Place to Live

**ZIONVILLE MOTEL**

**TRAILER PARK**

**AND**

**CAFE**

*Service for the Tourist*

*One Stop  
Driz it at* **ZIONVILLE**

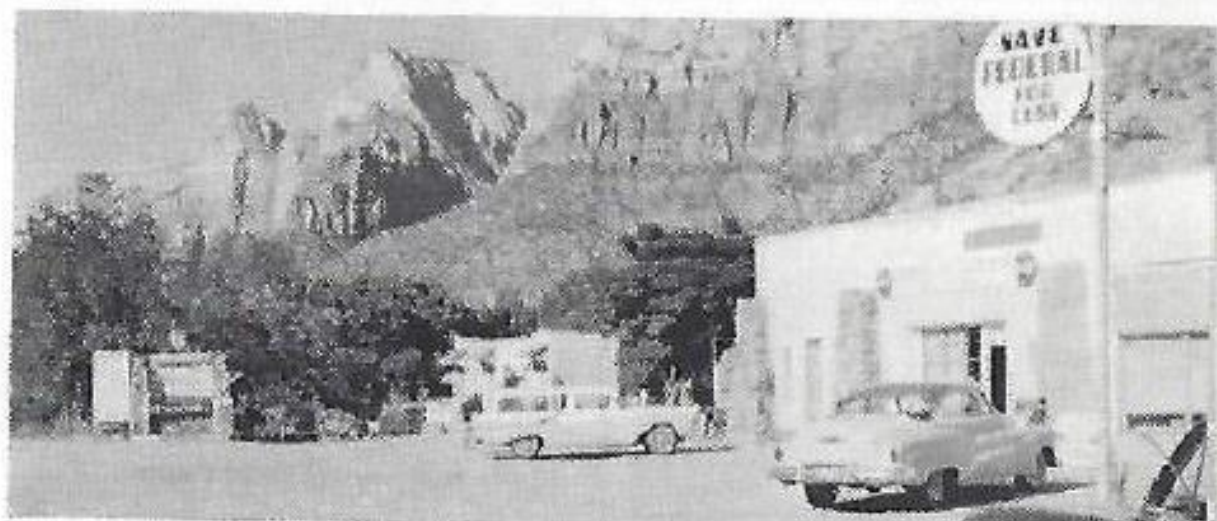
**CAFE**  
THE BEST OF FOOD AT FAIR PRICES.  
DINE AND ENJOY CANYON SCENERY  
FROM OUR PICTURE WINDOWS

**TRAILER SPACE**  
*Propane Gas Service*  
**ALL HOOK-UPS**  
AND LAUNDRY

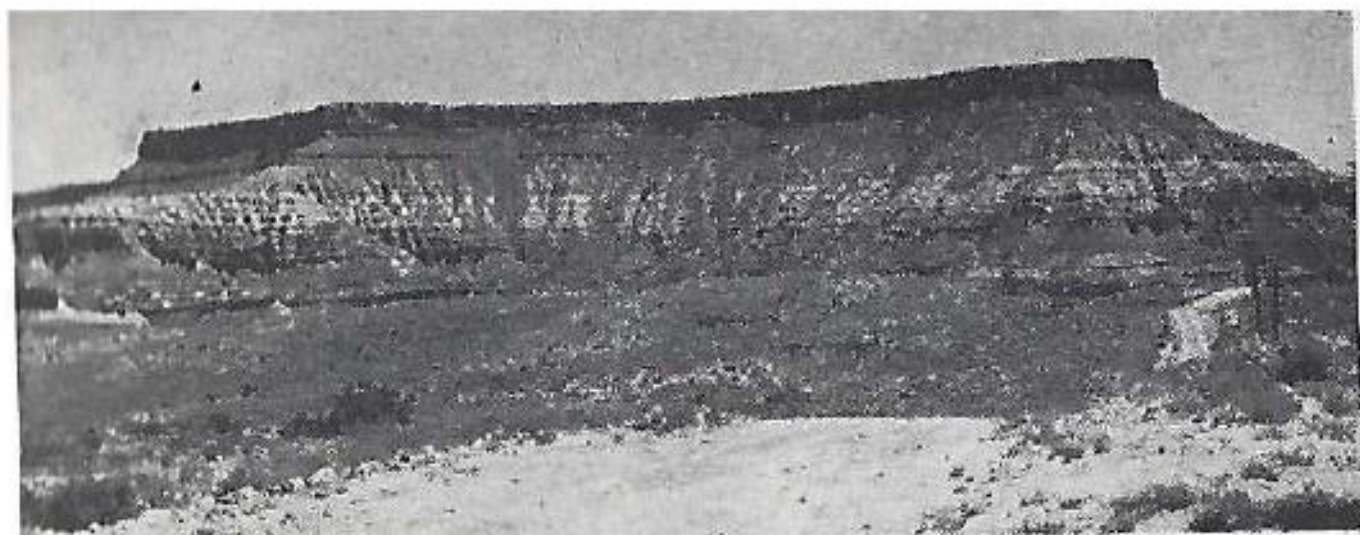
**MOTEL**  
Modern  
Cooled  
OUR PRICES KEEP YOUR PURSE HAPPY  
2 Persons \$7.50 per week \$10.00 per month  
BATHING 50-100% RECOMMENDED BY  
PEOPLE WHO LIKE GOOD BATHS

**GROCERY**  
FULL LINE  
OUR GREEN VEGETABLES CONTAIN  
THE SAME AMAZING CHLOROPHYLL  
FOUND IN SOME TOOTH PASTE

**GARAGE**  
**GAS FOR LESS**







## HURRICANE MESA

From St. George through the village of Washington, also settled as a part of the cotton industry, you pass on through Hurricane Valley with its luscious fruits and berries and its ditch hanging high along the hillside, up and up a winding road to the top of the plateau. Stop here and look back at the scene behind you, just in case you don't come back this way.

Pioneer travelers, measuring these distances in terms of days and nights on the road, of hours plodding across a sandy stretch or up a grade to a summit, called the whole area "the land which God forgot." This view to them was not something to admire but the place where they must live; these colors spoke to them more of sterility than beauty.

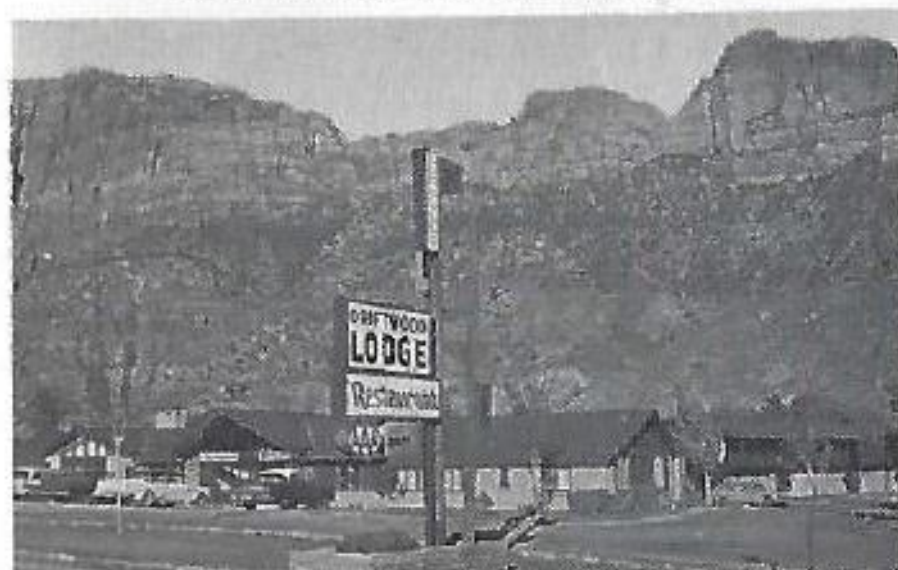
## Driftwood Lodge and Restaurant



*At the Gateway to Zion National Park*

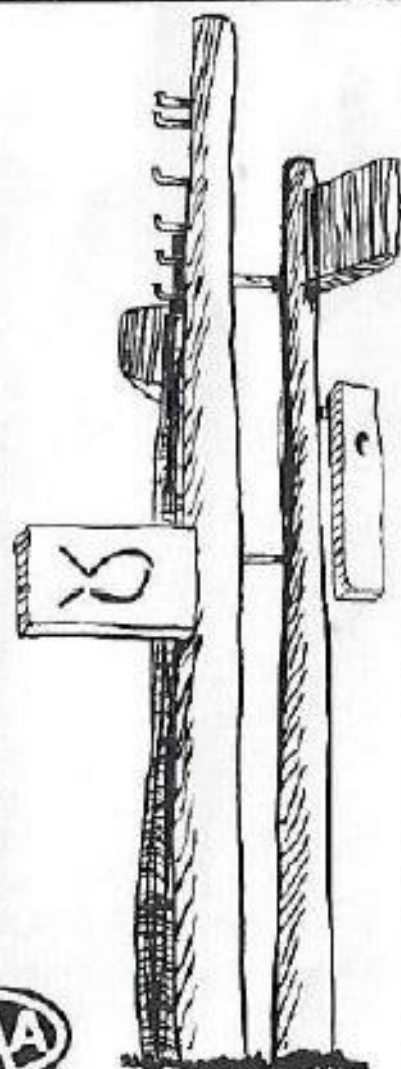
**16 Deluxe Units • Swimming Pool • Springdale's Finest Restaurant**

**Helen and Austen Excell, Owner-Mgrs.**



**DRIFTWOOD LODGE AND RESTAURANT**  
Springdale, Utah

Tourists long remember their enjoyable stay at this picturesque Lodge situated at the colorful southern entrance to Zion National Park. The accommodations are unequalled and the beautiful restaurant has the reputation of serving the finest food in southern Utah.



*At the Sign of the Poles*





You learn to ride early in this area



Guest Ranch for Little Cowboys  
A Working Cattle Ranch in the  
Heart of Dixie National Forest

**BROKEN ARROW RANCH**  
PINE VALLEY, UTAH

— A Horse for Every Boy —  
Help at Branding Time  
Join in our Junior Rodeos  
and All Ranch Activities

**JUNE 1 — LABOR DAY**  
**THREE — 3-WEEK PERIODS**  
During June, July and August

**FINEST DEER HUNTING IN UTAH**  
**LAST TWO WEEKS IN OCTOBER**

We provide guides - horses - meals  
Bunkhouse - complete hunting  
service including cold storage,  
processing and shipping of game.  
Fishing in our own private lakes and  
in the mountain streams  
Bunkhouse — Hayrides — Counselor  
HOME-COOKED MEALS — PACK TRIPS

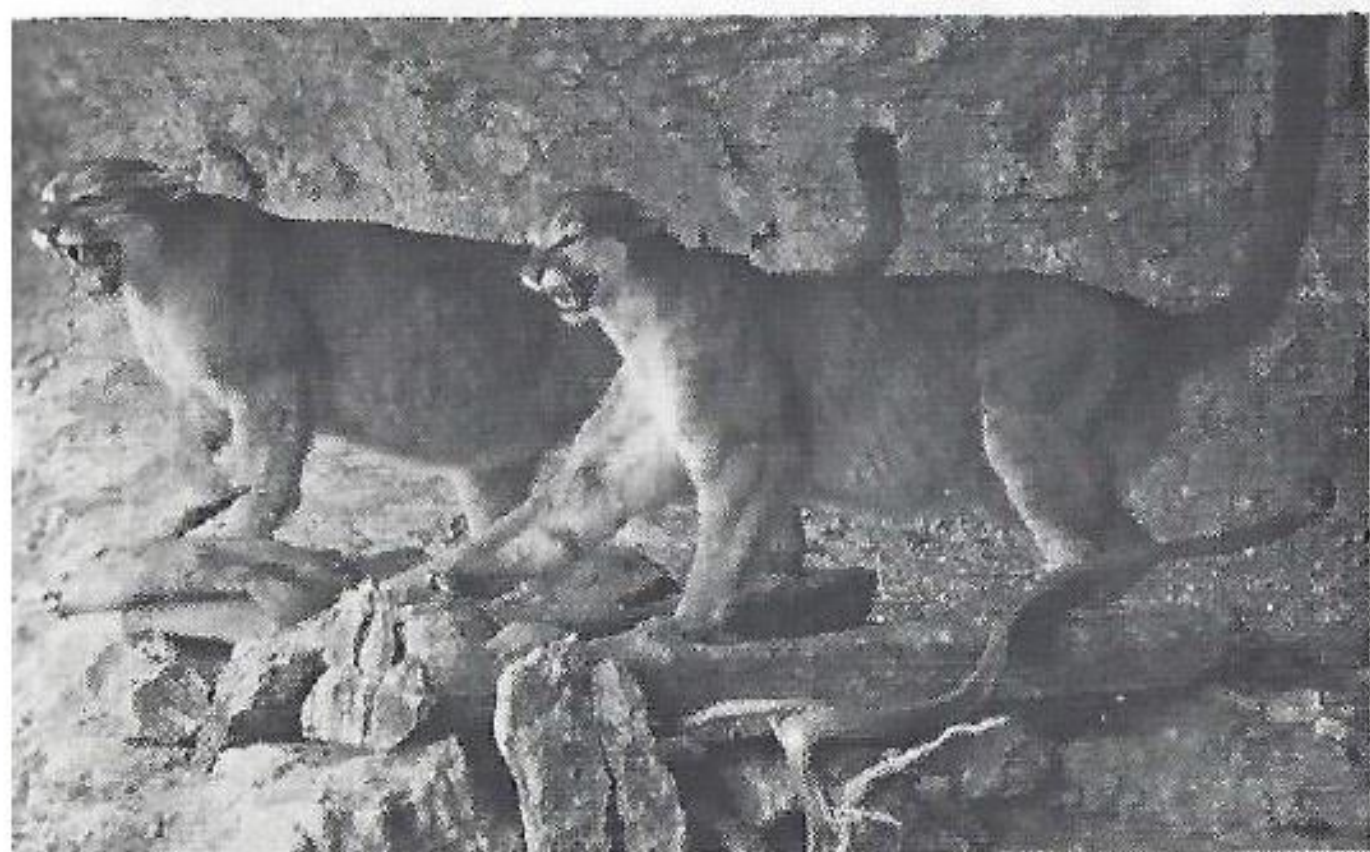
*For Information and Reservations — Jack Rencher*  
**Broken Arrow Ranch — Box 387 — St. George 451-W**





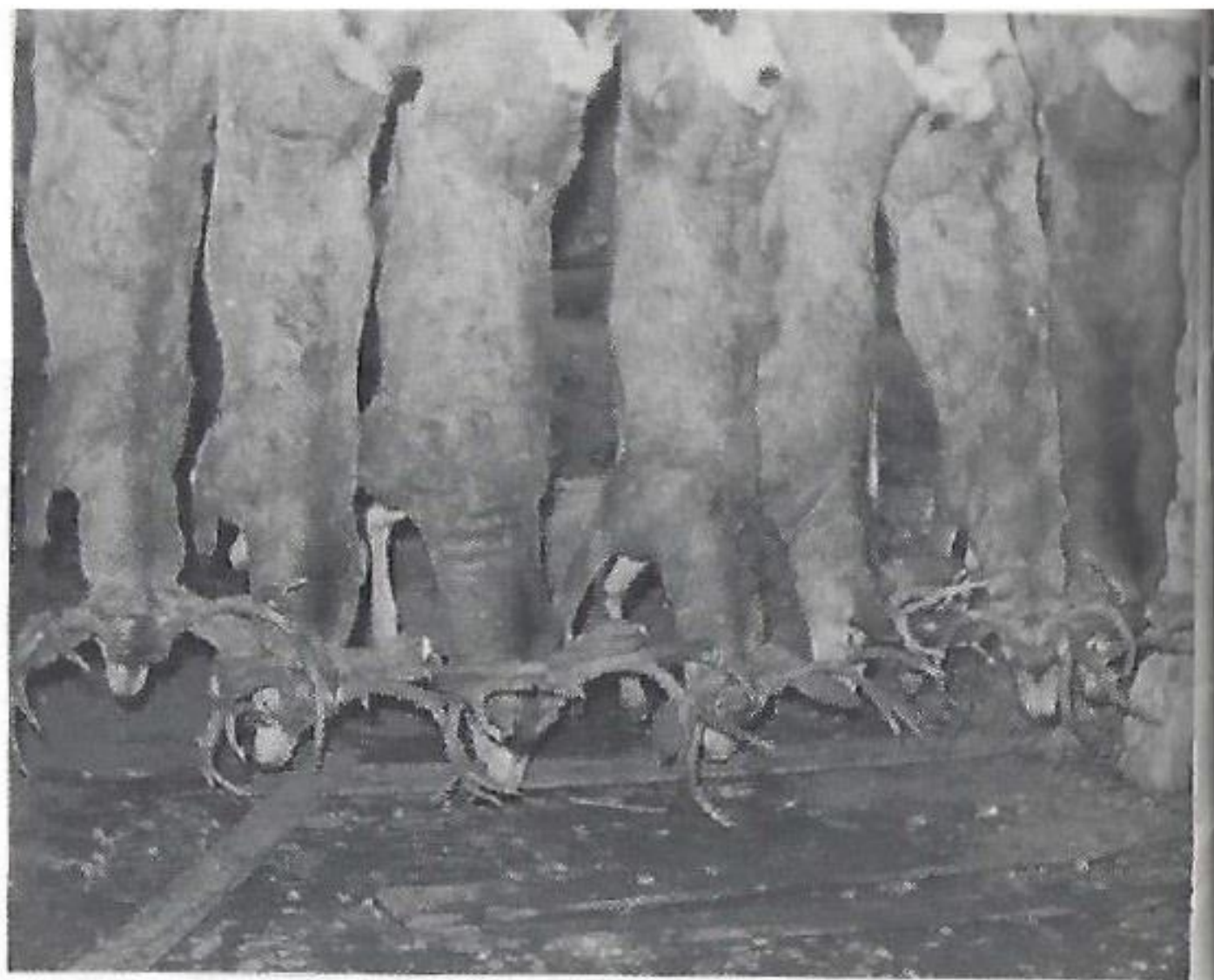
Mule Deer

**FOR THE BEST DEER HUNTING IN AMERICA  
OR A THRILLING MOUNTAIN LION HUNT  
THERE'S NO PLACE LIKE SOUTHWESTERN UTAH**



Mountain lions are numerous in the mountains of Southern Utah. Trained lion dogs trail the big cats, hold them treed while the hunter comes up and dispatches them.





Who wouldn't like to be along on this hunt

## PRISBREY DEER CAMP



**GUIDES - HORSES  
SUPERVISED HUNTING**

REED and DONNA PRISBREY

Phone New Harmony No. 2

New Harmony, Utah





Photo by Cannon Huntsman, New Harmony

## THE BEST DEER HUNTING IN AMERICA

### SUGAR LOAF CAFE

St. George, Utah



featuring



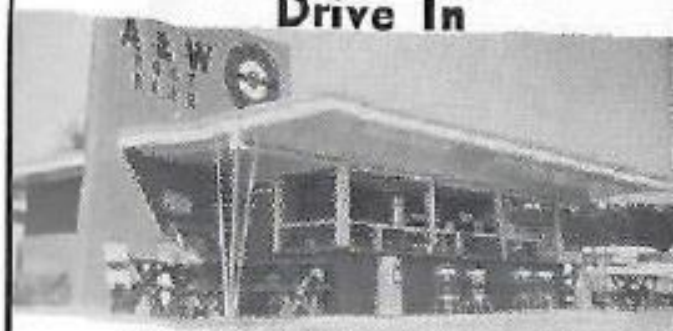
Broasted Chicken and Red-Magic Steak

PARK IN THE SHADE

309 East Highway 91 Orchard 3-3471



### A & W Root Beer Drive In



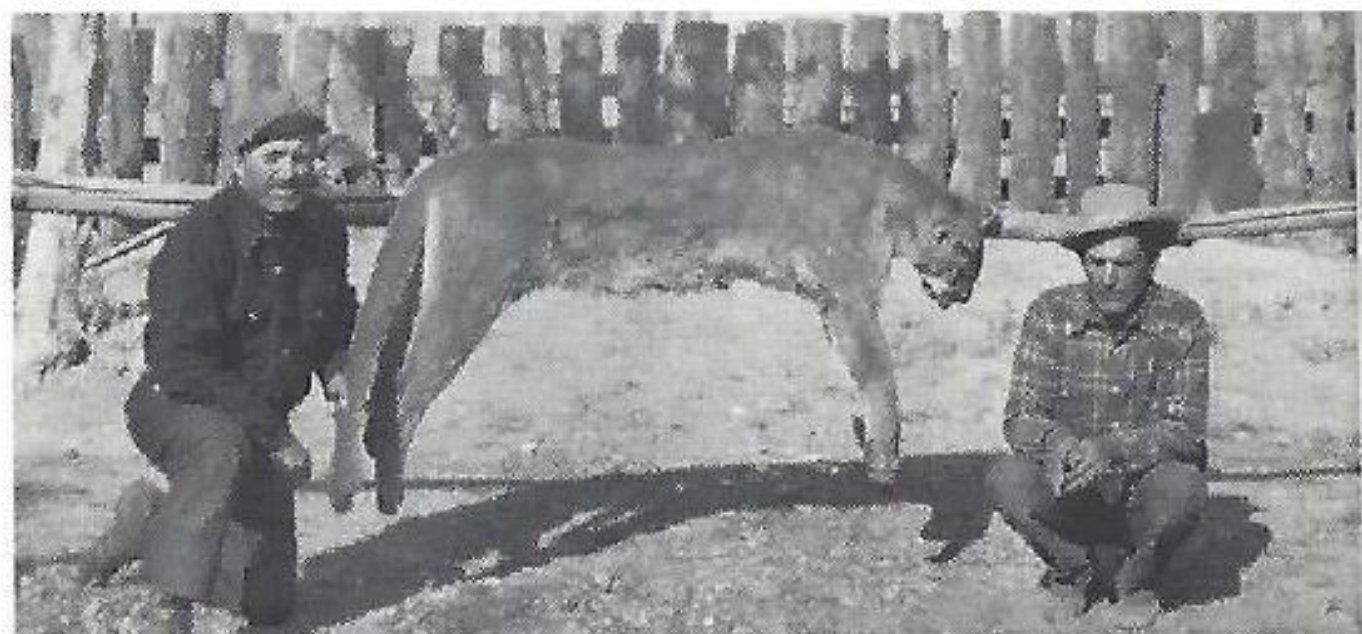
FROST COLD ROOT BEER  
Famous Sandwiches — Malts  
Curb Service — Ample Parking  
U.S. 91, Center of St. George, Utah

### FARMERS INSURANCE GROUP



**JAMES LUNDBERG**  
ST. GEORGE, UTAH





St. George is center of the finest deer hunting area in Utah, and within 50 miles to ideal hunting territory. For the nimrod with nerve, sinew, hair on the chest (and nothing better to do), there is lion hunting. The rough country in the vicinity of Pine mountain, Kolob, near Zion Park, and portions of the north rim of the Grand Canyon provide ample cougar for the amusement of all hunters.

## **LION HUNTING IN BEAUTIFUL SOUTHERN UTAH**



**YEAR ROUND — ALL HUNTS GUARANTEED  
PLANE SERVICE FROM PHOENIX AND SALT LAKE**

**MILT HOLT      GUNLOCK, UTAH**



# ST. GEORGE

## COMMUNITY OF SCENIC DISPLAY



### RETIRE

IN UTAH'S  
SEMI-TROPICAL  
DIXIELAND

### ST. GEORGE

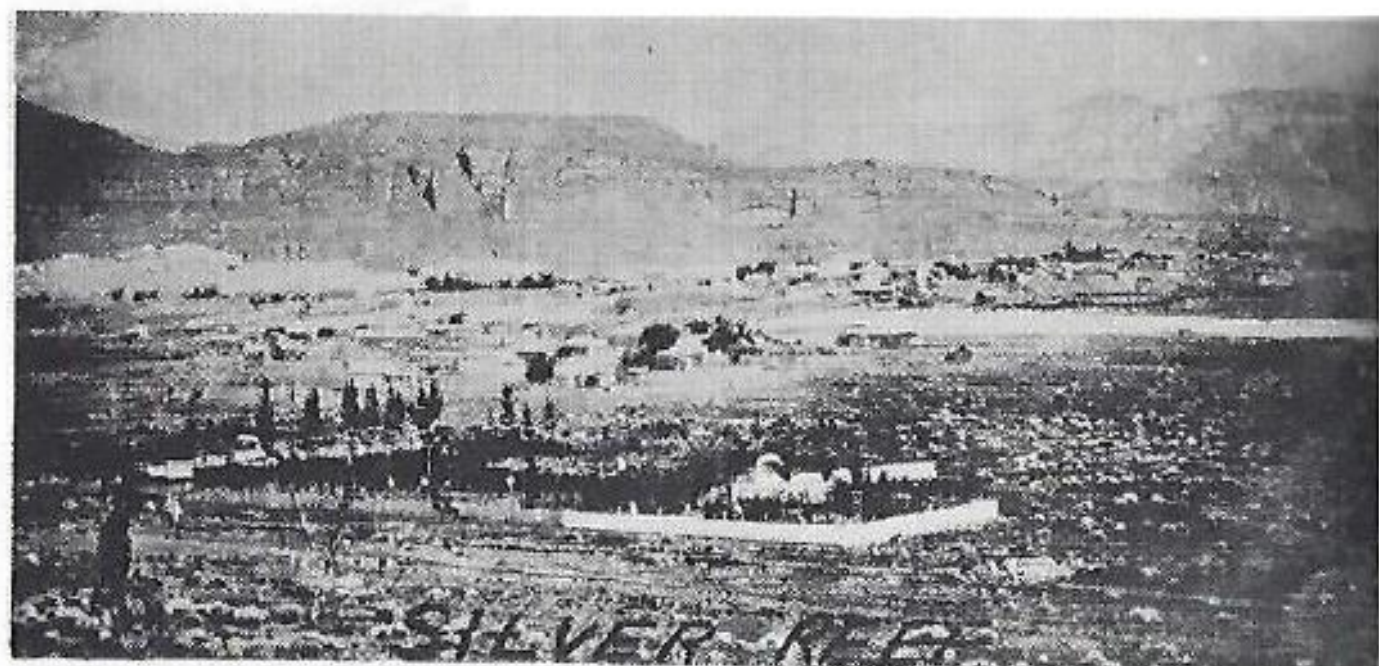
217 North 100 West  
Phone OR 3-3637

Mr. and Mrs. Tom Truman

### *Alger's* TRAILER COURT



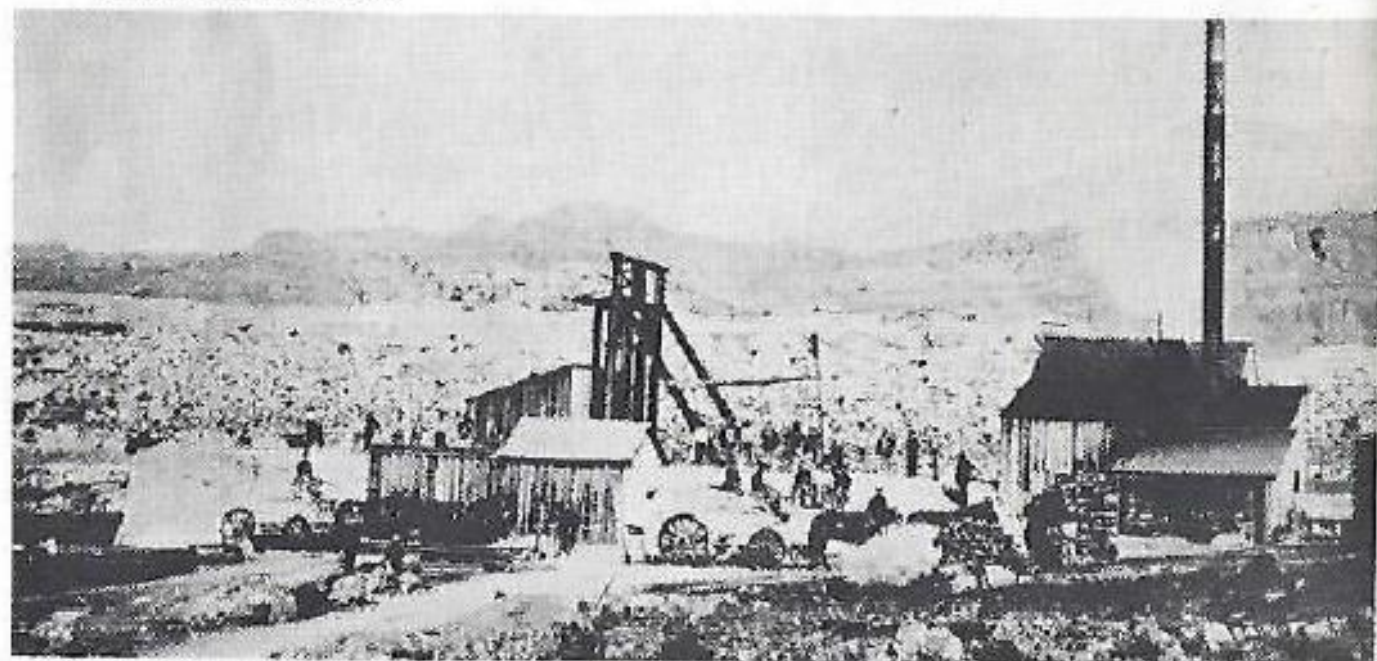




## SILVER REEF

Silver Reef is one of the most legendary ghost towns in the West. Some what more than five thousand miners and their followers lived here while nine million ounces of silver were picked and blasted from this reef of white sandstone and its petrified plants. Silver in the 1870's sold for more than one dollar an ounce. Now the iron-shuttered Wells Fargo station stares through ancient windows at the crumpling ruins of Silver Reef. Creeping cactus bristles by shallow-rooted sage, and forlorn fig-tree suckers move with the grass and thistles to cover all but the memories and legendary tales of Silver Reef that shall live as long as campfires burn.

Uranium ore for war or peace is now being mined here. Do not trespass without permission.



## THOMPSON MOTEL

"Tired? Rest In Quiet Comfort"

• W/w Carpeting • On Highway 91

• Tile Baths • Air Conditioned

Mr. and Mrs. E. C. Thompson, Owners

559 East 100 North - On U. S. Hwy. 91

ORchard 3-2762

ST. GEORGE, UTAH



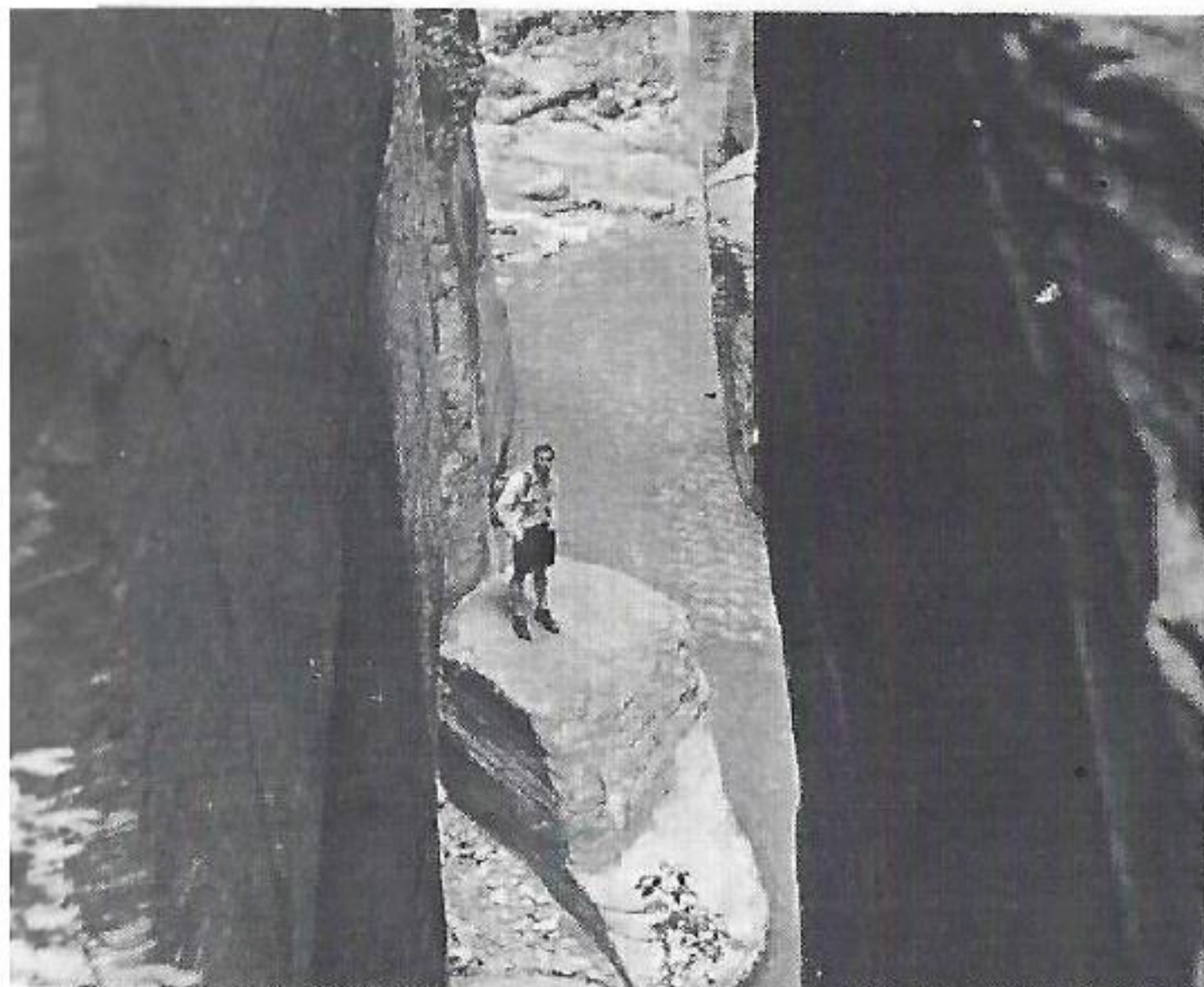
## WESTERN SUNSET MOTEL

- 18 Modern Units
- Family Accommodations
- Swimming Pool
- Air-Conditioned
- Fishing and Boating Trips

OR 3-9951

LaMont Brewers, Manager





**ZION NARROWS** at the north end of Zion National Park represents some of the most spectacular up and down scenery in the State of Utah. Cut through over 2,000 feet of soft sandstone by the north fork of the Virgin River, the canyon has a fall nine times the Colorado River. The gorge each year attracts hundreds of rugged tourists willing to tackle the 18 mile trek.

## **RED BLUFF MOTEL and Beauty Shop**



- Modern - Quiet • Air-Conditioned
  - Family Accommodations • Pets Allowed
  - Swimming Pool • Playground
  - Beauty Shop (no appointment needed)
- Cafe Nearby — Ph. ORchard 3-4152  
Under New Management  
Mel and Lawana Hansen

## **BIG "D" MOTEL**

HOME OF UTAH PICTURE STONE

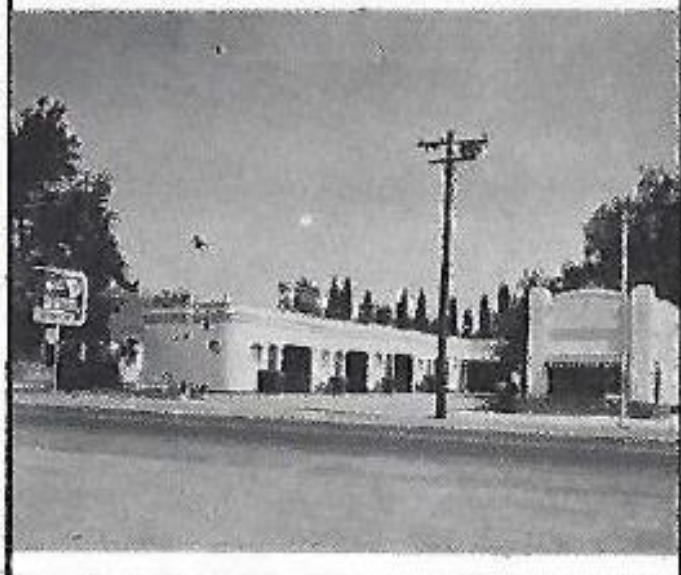
Cordial Welcome to Family Tourists

• Clean • Comfortable • Convenient  
Kitchens • Garages • TV • Pets Allowed

Mr. and Mrs. Clarence Force

W. HIGHWAY 91

OR 3-3171







## KANARRA Service and Garage



**SIGNAL GAS**  
Complete Motor Repair  
24 HOUR ROAD SERVICE  
**Kanarrville, Utah**

MOUNTAIN LIONS ARE PREDATORY ANIMALS  
AND MAY BE HUNTED AT ANY TIME. ORGAN-  
IZED LION HUNTS ARE AVAILABLE IN UTAH.

## BATEMAN PHARMACY

QUALITY DRUGS &  
PRESCRIPTIONS

102 East City Center



**PRESCRIPTIONS**  
*Carefully Compounded*



Orchard 3-3575 St. George, Utah



## RANCHE CAFE



REAL  
RANCH  
COOKING!



REAL WESTERN DINNERS

☆ Dutch Ovens ☆ Sourdough Biscuits ☆ Bar-B-Que  
ON HIGHWAY 91 SUPER PARKING KANARRAVILLE, UTAH



## CONOCO MOTEL

CENTER OF TOWN

AIR-CONDITIONED

Gateway to Zion — Bryce — Grand Canyon

BEAUTIFUL SWIMMING POOL FOR YOUR CONVENIENCE

Family Accommodations • W/w Carpeting • Tile Showers  
Free TV and Room Phones • Pulse-A-Rhythm Mattresses  
PHONE OR 3-3543 Mr. and Mrs. Virgil Redmond

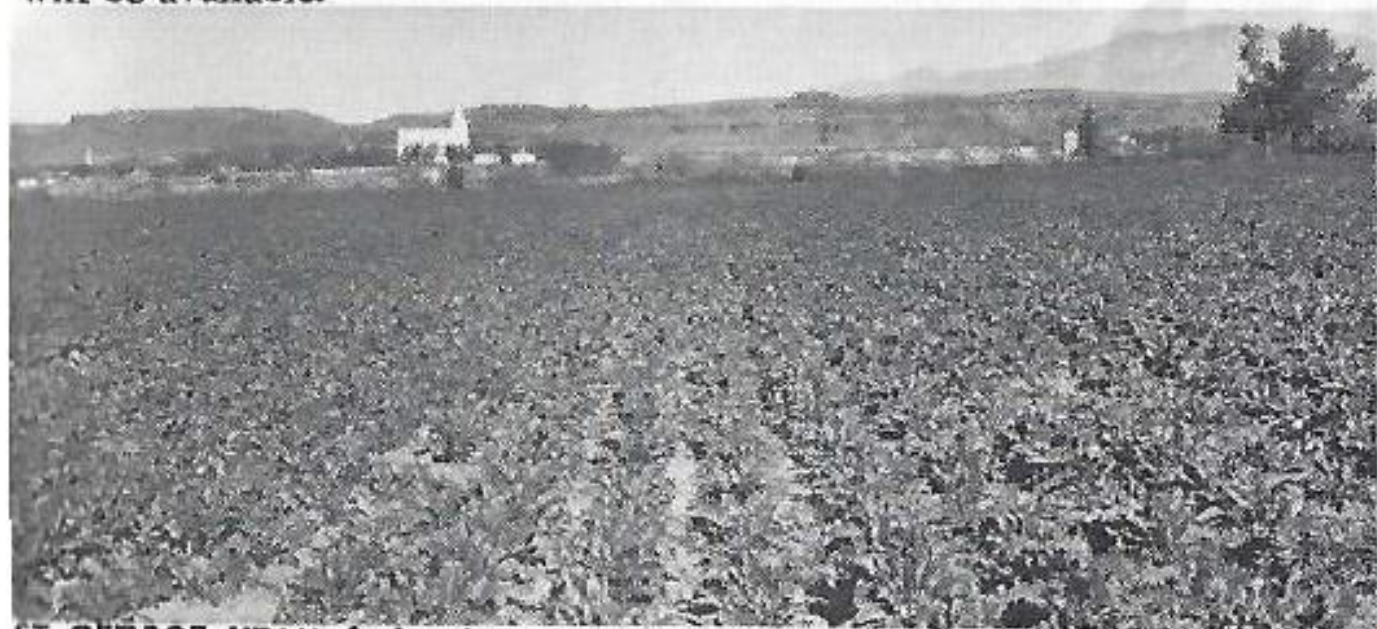




## YEAR 'ROUND VACATIONLAND

St. George, Utah — Where the Summer Sun Spends the Winter. To the vacation-bound tourist this is a most meaningful phrase. From the air-conditioned comfort enjoyed in motels and restaurants in July to the shirt-sleeved strolls of December, it's a fine place to enjoy oneself. In the summer Cedar Breaks National Monument and Grand Canyon National Park are but hours away. For your year 'round pleasure add Bryce Canyon and Zion National Parks, Pipe Spring and Grand Canyon National Monument. Fish during the summer at Pine Valley, Enterprise Reservoir, Sand Cove, Navajo or Panguitch Lake — or on any of the trout-filled creeks. In the winter, fishing and boating are wonderful on Lake Mead. Autumn brings sportsmen who find pleasure in their quest for water fowl, quail, or the elusive mule tail deer.

For the color photographer there is year 'round pleasure and challenge. From March until November wild flowers can be photographed. And the tones of the multi-colored hills change with the month and with the hour. Historical sites are widespread — the ghost town of Silver Reef, the Brigham Young Home, the gleaming white Temple, and the classic New England style Tabernacle. Indian petroglyphs abound. Pot sherds and arrowheads catch the fancy of still others. The city park, with its convenient tables and gleaming electric grills, is a favorite site for picnics. A new and modern bowling alley attracts all ages. Swimming is the rule, in season, whether it be at the beautiful municipal pool or at any of a number of modern motels. And by the time you read this, it is likely that a golf course will be available.



ST. GEORGE, UTAH, hub of a rich agricultural and livestock producing area



### RONALD BRACKEN'S MOBIL SERVICE



- Prompt Courteous Service
- Tourist Information

**Complete Automotive Service**

- Motor Tune-Up
- Expert Lubrication

PHONE OR 3-3851— Located West of Stop Light—Highway 91 — ST. GEORGE





St. George Temple

The beautiful snow-white Mormon Temple, completed in 1877, was built (by Scotch and English master workmen who had emigrated to this country earlier) at a cost of \$800,000, the first Mormon temple to be completed in Utah—or west of the Mississippi River. Built on swampy ground, its foundation is composed of hundreds of tons of black volcanic rock beaten into place by an old cannon which the versatile builders utilized as a horse-powered pile driver. Oxen brought the logs and timber used in this building from eighty miles away. Surrounded by beautiful grounds with many semi-tropical plants, this Mormon Temple is a beacon for passing planes, as well as the first landmark glimpsed by tourists upon entering the valley.



UTAH'S HIGHEST BRIDGE



## SERVICE DIRECTORY

While you are in the St. George Area take advantage of the following services offered for your comfort, convenience and pleasure:

### — MOTELS —

#### ST. GEORGE

Bennett Motel—622 E 100N	OR 3-3351
Big D Motel—338 W 100 N	OR 3-3171
Big Hand Rugged West Motel— 46 W 100 N	OR 3-2401
Carolina Pines Motel—664 E 100 N	OR 3-3559
Colonial Motel—299 E 100 N	OR 3-2612
Conoco Motel—247 E 100 N	OR 3-3543
El Paso Lodge—111 W 100 N	OR 3-3561
Hall's Motel—185 E 100 N	OR 3-3531
Indian Village Motel—420 E 100 N	OR 3-9984
Milne Motel—371 E 100 N	OR 3-3526
Motel St. George—525 E 100 N	OR 3-3461
Red Bluff Motel—514 N Bluff	OR 3-4152
Sands Motel—581 E 100 N	OR 3-3501
Shady Acre Motel—770 E 100 N	OR 3-2771
Southern Motel—407 W 100 N	OR 3-3971
Stardust Motel—651 E 100 N	OR 3-3101
Thompson Motel—559 E 100 N	OR 3-2762
Twin Oaks Motel—231 W 100 N	OR 3-3551
Utah Motel—260 E 100 N	OR 3-3261
Wells Svc & Motel—260 E 100 N	OR 3-3261
Wittwer Motor Lodge—316 E 100 N	OR 3-3541
Western Sunset Motel—310 W 100 N	OR 3-9951

#### HURRICANE

Swan Motel—Hurricane	ME 5-2501
----------------------	-----------

#### SPRINGDALE

Driftwood Lodge—Springdale	PR 2-4444
Terrace Brook Lodge—Springdale	PR 2-4311
Zion Park Motel—Springdale	PR 2-3303
Zion Rest Motel—Springdale	PR 2-4811
Zionville Motel—Springdale	PR 2-4711

### — RESTAURANTS —

#### ST. GEORGE

A & W Drive In—140 W 100 N	OR 3-2032
Big Hand Cafe—101 N Main	OR 3-2441
Dairy Queen—471 E 100 N	OR 3-3112
Dick's Cafe—795 E 100 N	OR 3-3841
Kelly's Cafe—531 N Bluff	OR 3-9997
Liberty Cafe—60 E 100 N	OR 3-2571
Sugar Loaf Cafe—309 E 100 N	OR 3-3471
Wishbone Cafe—22 E 100 N	OR 3-9994

#### HURRICANE

Jerry's Cafe — Hurricane	ME 5-2922
--------------------------	-----------

#### SPRINGDALE

Canyon Cafe—Springdale	PR 2-4741
Driftwood Lodge—Springdale	PR 2-4444
Zion Canyon Inn—Zion Nat'l Park	PR 2-4911
Zionville Cafe—Springdale	PR 2-3319

### — BANKS —

Bank of St. George—St. George	
State Bank of Hurricane—Hurricane	

### — TRAILER COURT —

Alger Trailer Court—573 W 400 N—St. George	
--	--

### — CHAMBER OF COMMERCE —

237 North Bluff—St. George	OR 3-3671
----------------------------	-----------

### CHURCHES . . .

Community Baptist Church	St. George
St. George Catholic Church	St. George
Church of Jesus Christ of Latter-day Saints	
Six wards in St. George and one in Hurricane and Springdale	

THERE IS A MORMON CHURCH  
IN EVERY COMMUNITY IN UTAH

### — SERVICE STATIONS —

#### ST. GEORGE

Bostwick Texaco Service Station— 551 N Bluff	OR 3-9904
Bracken Mobil Service— 190 W 100 N	OR 3-3851
Clark Prsbrey Conoco Service— 227 E 100 N	OR 3-9971
Conoco Service Station— 229 E 100 N	OR 3-9971
Utoco Service—5 W 100 N	OR 3-9960
There are 20 Service Stations in St. George to serve you.	

### POPULATION OF COMMUNITIES IN WASHINGTON COUNTY

St. George	4500
Hurricane	1370
Enterprise	790
Washington	498
Rockville	458
Santa Clara	319
LaVerkin	387
Toquerville	280
Springdale	171
Leeds	160
Virgin	154
New Harmony	134
Ivins	96
Gunlock	89
Veyo	84
Central	49
Pintura	11

POLICE . . . . .OR 3-4121

SHERIFF'S OFFICE—

97 E 100 N . . . .OR 3-3121

FIRE DEPT. . . . .OR 3-2822



